
ROLL HANDLING PRODUCTS


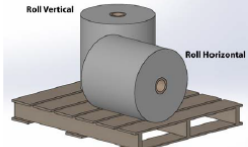
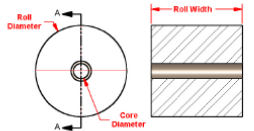
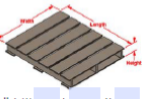
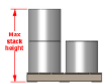
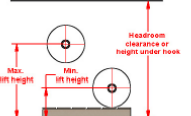


SCHLUMPF USA

QUOTING & ORDERS: INFORMATION WE NEED

COLLECTING ACCURATE DATA FROM THE CUSTOMER IS ESSENTIAL TO YOUR SUCCESS & PROFITABILITY! BEFORE REQUESTING A QUOTE OR SUBMITTING AN ORDER PLEASE FIND OUT:

- ❑ ALL AVAILABLE OPERATING DATA
- ❑ WHAT ARE THE CUSTOMER'S GOALS?
- ❑ ARE THERE OBSTACLES IN THE AREA?
- ❑ OTHER GENERAL CONDITIONS & INFORMATION?

 SCHLUMPF USA <small>39 Enterprise Drive, Suite 1, Windham, ME 04062 USA T: +1 207 893 1903 F: +1 207 893 1905 sales@schlumpf-inc.com www.schlumpf-inc.com</small>		Roll Handling Application Quote Request Form <small>Application information is requested prior to quotation. Information supplied to Schlumpf USA will be considered proprietary and confidential. Revised Nov. 2013. Subject to disclaimer. Changes to application data may affect pricing and delivery time!</small>
Company:	Address:	Tel:
Contact:		Fax:
End User:		E-Mail:
Equipment Type: Check: Hoist & Crane Based <input type="checkbox"/> Portable Floor Based <input type="checkbox"/> Stationary <input type="checkbox"/> Other <input type="checkbox"/>		
Roll Orientations 		Roll & Core Specifications: 
What do you want to do: Lift Only Horizontal <input type="checkbox"/> Vertical <input type="checkbox"/> Lift & Turn <input type="checkbox"/> By the Core <input type="checkbox"/> By the OD <input type="checkbox"/> Combination ID/ OD <input type="checkbox"/>		Values: Inch <input type="checkbox"/> Metric <input type="checkbox"/> Max. roll weight? _____ Min. roll weight? _____ Max. roll width? _____ Min. roll width? _____ Max. roll diameter? _____ Min. roll diameter? _____ Roll material? _____ Will roll telescope? <input type="checkbox"/> Core size(s)? _____ Core Material? _____
Mandrel / Probe Options—Check: Remote retract <input type="checkbox"/> Pneumatic retract <input type="checkbox"/> Manual retract <input type="checkbox"/> Surface rollers <input type="checkbox"/> Bumper nose <input type="checkbox"/> Additional length <input type="checkbox"/> Shaft coupling <input type="checkbox"/> Non-standard gripper <input type="checkbox"/> Core stop <input type="checkbox"/>	Machine / Device Options—Check: Side shift <input type="checkbox"/> Camera system <input type="checkbox"/> Hoist integration <input type="checkbox"/> Roll pusher <input type="checkbox"/> Spare Battery Pack <input type="checkbox"/> Charging station <input type="checkbox"/> Precision alignment <input type="checkbox"/> Floor brakes <input type="checkbox"/> Spare mandrel holder <input type="checkbox"/>	Describe Application / Reasons For Request: New process? <input type="checkbox"/> Replace Existing System? <input type="checkbox"/> Operator Injury? <input type="checkbox"/> Safety Concerns? <input type="checkbox"/> Increase Productivity? <input type="checkbox"/> Usage Cycles / Hour _____ Shifts _____ Photos / Videos Available? <input type="checkbox"/> Purchase Timeline? _____ Restrictions to workspace / environment? Describe: _____ _____ _____
Operating Requirements:		
 Pallet W _____ L _____ H _____ Access: Full <input type="checkbox"/> 4 sides & corners Limited <input type="checkbox"/> _____ sides _____ Rolls / Layer _____	Available power sources: Electric <input type="checkbox"/> VAC x _____ Hz x _____ P Air <input type="checkbox"/> _____ Psi / Bar  Max. stack height _____ Stack Height _____	 Headroom _____ Min. lift height _____ Max. lift height _____ Min Lift _____ Max Lift _____

**NOTE! ORDERS WILL NOT BE PROCESSED
WITHOUT A COMPLETE APPLICATION DATA!**

OVERVIEW.... WHAT PRODUCTS WE OFFER:

- ✓ HOIST BASED LIFTERS & TURNERS FOR
CRANES
 - ✓ PORTABLE - MOBILE LIFTERS, TURNERS &
TRANSPORTERS
 - ✓ STATIONARY / FIXED TURNERS
 - ✓ SPECIAL - CUSTOM EQUIPMENT &
SYSTEMS
-

HOIST / CRANE BASED PRODUCTS:

- ✓ VRL – VERTICAL ROLL LIFTERS
 - VRL 1000, VRL-2200, VRL-4400
 - ✓ MRT – MANUAL ROLL TURNERS
 - ✓ MRT-150, MRT-330, MRT-500
 - ✓ PRT – PNEUMATIC ROLL TURNERS
 - ✓ PRT-330, PRT-500
 - ✓ HRL – HORIZONTAL ROLL LIFTERS
 - ✓ HRL-330
 - ✓ HRT – HYDRAULIC ROLL TURNER
 - ✓ HRT-4400
-

VRL-1000

ROLL CENTER LIFTERS

VRL-1000-3C & 6C ROLL CENTER LIFTERS

- ❑ 3" OR 6" CORES STANDARD
- ❑ SPECIAL & METRIC SIZES AVAILABLE
- ❑ 1,000 LBS (453 KG) CAPACITY
- ❑ SIMPLE, TWO GRIPPER DESIGN
- ❑ T-HANDLE RELEASE
- ❑ SPRING EXPANDED - FAIL SAFE
- ❑ POWDER COATED STEEL CONSTRUCTION
- ❑ LIGHT WEIGHT, EAST TO HANDLE
- ❑ VERY LOW PRICE
- ❑ CAN ALSO BE USED FOR TURNING FROM HORIZONTAL TO VERTICAL *



* NOTE! WATCH OUT FOR PENDULUM EFFECT! TRAILING EDGE OF ROLL CAN BE DAMAGED AS ROLL TURNS!

VRL-2200 ROLL CENTER LIFTERS

VRL-2200 ROLL CENTER LIFTERS

- ❑ ACCEPTS MANDRELS OF ANY SIZE
- ❑ CHANGE SIZES IN SECONDS WITH NO TOOLS
- ❑ 2,200 LBS (1000 KG) CAPACITY
- ❑ T-HANDLE OR TOGGLE RELEASE
- ❑ SPRING FOR EXPANDED - FAIL SAFE
- ❑ LIGHT WEIGHT, EAST TO HANDLE
- ❑ CAN ALSO BE USED FOR TURNING FROM HORIZONTAL TO VERTICAL *
- ❑ VERY LOW PRICE!



* NOTE! WATCH OUT FOR PENDULUM EFFECT! TRAILING EDGE OF ROLL CAN BE DAMAGED AS ROLL TURNS!

VRL-4400 AUTOMATIC ROLL CENTER LIFTERS

- ❑ COMPLETELY AUTOMATIC OPERATION - HANDS FREE
- ❑ GREAT WHERE THE CORE IS DIFFICULT TO SEE OR WHERE THE OPERATOR CAN'T REACH
- ❑ 3" & 6" CORE STANDARD
- ❑ OTHER SIZES AVAILABLE (BUT LIMITED)
- ❑ 4,400 LBS (2000 KG) CAPACITY
- ❑ HANDLES MULTIPLE ROLLS



NOT SAFE FOR TURNING ROLLS UNDER ANY CIRCUMSTANCES!

VRL-500-TA CENTER LIFT WITH TILT ASSIST

- ❑ LIFT AND LOWER THE HOIST TO TURN ROLLS
- ❑ USE ANY MANDREL SIZE
- ❑ 500 LBS (236 KG) CAPACITY
- ❑ EASY TO HANDLE & USE
- ❑ INEXPENSIVE COMPARED TO POWERED TURNERS
- ❑ COMPLETELY SAFE - WILL NOT SWING LIKE A PENDULUM
- ❑ BEST FOR WIDE ROLLS WITH SMALL DIAMETER



VRL-1000-TA CENTER LIFT WITH TILT-ASSIST

- ❑ LIFT AND LOWER THE HOIST TO TURN ROLLS
- ❑ USE ANY MANDREL SIZE
- ❑ 1000 LBS (450 KG) CAPACITY
- ❑ EASY TO HANDLE & USE
- ❑ INEXPENSIVE COMPARED TO POWERED TURNERS
- ❑ COMPLETELY SAFE - WILL NOT SWING LIKE A PENDULUM
- ❑ BEST FOR WIDE ROLLS WITH SMALL DIAMETER



MRT-150 MANUAL ROLL TURNERS

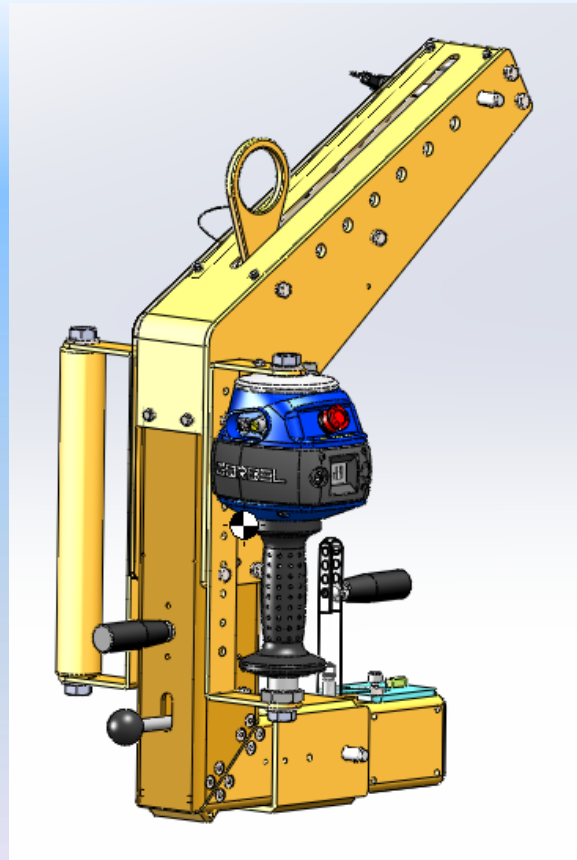
- ❑ COMPACT & LIGHTWEIGHT & EASY TO HANDLE
 - ❑ UNIQUE 45° PIVOT MECHANISM BALANCES LOAD. TURNS WITH NEARLY NO EFFORT.
 - ❑ UNIVERSAL HOLDER ACCEPTS ANY MANDREL SIZE
 - ❑ 150 LBS (68 KG) CAPACITY
 - ❑ AUTO CENTER OF GRAVITY (CG) ADJUSTMENT
 - ❑ VERY FAST AND USER FRIENDLY
 - ❑ EASILY CUSTOMIZED
-



MRT-150

MODIFICATIONS & OPTIONS

- ❑ CUSTOM ARM LENGTHS
- ❑ MANUAL CG ADJUSTMENT
- ❑ INTEGRATED HOIST CONTROLS
- ❑ ANTI-TELESCOPING ATTACHMENT
- ❑ PNEUMATIC RETRACTION
- ❑ ROLL PUSHER
- ❑ FULL STAINLESS STEEL
CONSTRUCTION OPTIONAL



MRT-330-ADJ MANUAL ROLL TURNERS

- ❑ COMPACT & LIGHTWEIGHT & EASY TO HANDLE
 - ❑ UNIQUE 45° PIVOT MECHANISM BALANCES LOAD. TURNS WITH NEARLY NO EFFORT.
 - ❑ UNIVERSAL HOLDER ACCEPTS ANY MANDREL SIZE
 - ❑ 330 LBS (150 KG) CAPACITY
 - ❑ AUTO CENTER OF GRAVITY (CG) ADJUSTMENT
 - ❑ VERY FAST AND USER FRIENDLY
 - ❑ EASILY CUSTOMIZED
-



MRT-330 FAMILY MODIFICATIONS & OPTIONS

- ❑ CUSTOM ARM LENGTHS
- ❑ MANUAL CG ADJUSTMENT
- ❑ INTEGRATED HOIST CONTROLS
- ❑ ANTI-TELESCOPING ATTACHMENT
- ❑ PNEUMATIC RETRACTION
- ❑ ROLL PUSHER
- ❑ FULL STAINLESS STEEL CONSTRUCTION OPTIONAL



MRT-500 MANUAL ROLL TURNERS

- ❑ HEAVY-DUTY MRT VERSION
 - ❑ UNIQUE 45° PIVOT MECHANISM BALANCES LOAD. TURNS WITH NEARLY NO EFFORT.
 - ❑ UNIVERSAL HOLDER ACCEPTS ANY MANDREL SIZE
 - ❑ 500 LBS (226 KG) CAPACITY
 - ❑ AUTO CENTER OF GRAVITY (CG) ADJUSTMENT
 - ❑ VERY FAST AND USER FRIENDLY
 - ❑ EASILY CUSTOMIZED
-



MRT-500

MODIFICATIONS & OPTIONS

- ❑ CUSTOM ARM LENGTHS
- ❑ MANUAL CG ADJUSTMENT
- ❑ INTEGRATED HOIST CONTROLS
- ❑ ANTI-TELESCOPING ATTACHMENT
- ❑ PNEUMATIC RETRACTION
- ❑ ROLL PUSHER
- ❑ FULL STAINLESS STEEL CONSTRUCTION OPTIONAL



PRT-330

PNEUMATIC ROLL TURNERS

- ❑ HEAVY-DUTY PNEUMATIC ROTATOR
 - ❑ MAKES ALL TURNING EFFORTLESS
 - ❑ UNIVERSAL HOLDER ACCEPTS ANY MANDREL SIZE
 - ❑ 330 LBS (150 KG) CAPACITY
 - ❑ AUTO CENTER OF GRAVITY (CG) ADJUSTMENT
 - ❑ VERY FAST AND USER FRIENDLY
 - ❑ EASILY CUSTOMIZED
-



PRT-330

MODIFICATIONS & OPTIONS

- ❑ CUSTOM ARM LENGTHS
- ❑ MANUAL CG ADJUSTMENT
- ❑ INTEGRATED HOIST CONTROLS
- ❑ ANTI-TELESCOPING ATTACHMENT
- ❑ PNEUMATIC RETRACTION
- ❑ ROLL PUSHER
- ❑ FULL STAINLESS STEEL CONSTRUCTION OPTIONAL



HRL-330-AL HORIZONTAL LIFTER

SAME CONSTRUCTION AS MRT-330-AL, BUT WITHOUT PIVOT-TURNER

- ❑ FOR HORIZONTAL PICK & PLACE TRANSFERS ONLY
 - ❑ AUTO-LEVEL OR MANUAL C.G. ADJUSTMENT
 - ❑ UNIVERSAL HOLDER ACCEPTS ANY MANDREL SIZE
 - ❑ 330 LBS (150 KG) CAPACITY
 - ❑ NUMEROUS OPTIONS
 - ❑ EASILY CUSTOMIZED
-



HRL-330-AL

MODIFICATIONS OPTIONS

SAME CONSTRUCTION AS MRT-330-AL, BUT WITHOUT PIVOT-TURNER

- ❑ FOR HORIZONTAL PICK & PLACE TRANSFERS ONLY
 - ❑ AUTO-LEVEL OR MANUAL C.G. ADJUSTMENT
 - ❑ UNIVERSAL HOLDER ACCEPTS ANY MANDREL SIZE
 - ❑ 330 LBS (150 KG) CAPACITY
 - ❑ NUMEROUS OPTIONS
 - ❑ EASILY CUSTOMIZED
-



OTHER HRL DESIGNS

- ❑ C-BALES WITH MANUAL OR AUTOMATIC C.G. ADJUSTMENT
- ❑ CRADLE ROLL SUPPORTS
- ❑ PROBE ROLL SUPPORTS
- ❑ ADJUSTABLE PROBES
- ❑ SIMPLE, INEXPENSIVE DESIGNS
- ❑ 1,000 LBS (453 KG) CAPACITY DEPENDING ON DESIGN
- ❑ NUMEROUS OPTIONS
- ❑ EASILY CUSTOMIZED



HRT-2000

HYDRAULIC ROLL TURNER

- ❑ ALL ELECTRIC OPERATION. OUR LARGEST, O.D .CLAMPING HEAVY-DUTY TURNER
- ❑ 2,000 LBS (906 KG) CAPACITY (DEPENDING ON ROLL WIDTH)
- ❑ 230 / 460 VAC X 1 OR 3 POWER
- ❑ NUMEROUS OPTIONS
- ❑ POWERED C.G. ADJUSTMENT
- ❑ FAST BUT NOT AS USER FRIENDLY AS SMALLER MODELS. UNIT IS VERY HEAVY!



HRT-2000

MODIFICATIONS & OPTIONS

- ❑ ADJUSTABLE HANDLEBAR
- ❑ INTEGRATED HOIST CONTROLS
- ❑ PNEUMATIC RETRACT
- ❑ HEAVY-DUTY MANDREL
HOLDER ACCEPTS ANY SIZE
- ❑ TAILOR TO ROLL SIZES



PORTABLE / MOBILE PRODUCTS:

- ✓ MRH – VERTICAL ROLL LIFTERS
 - MRH-300, MRH-500
 - ✓ ERH – ELECTRIC ROLL HANDLERS
 - ✓ ERH-200, ERH-400
 - ✓ VCRD – V-CRADLE ROLL DOLLY
 - ✓ VCRD-1000, OTHER MODELS
 - ✓ HRC – HYDRAULIC ROLL CART
 - ✓ HRC-330, 550, 770, 1100 & 1760
 - ✓ HEAVY DUTY ROLL TRUCKS
 - ✓ SPEEDY, MASTER, DELTA WITH VARIOUS TOOLING FORMS
-

MRH-300-PT MANUAL ROLL HANDLERS

- ❑ OUR LOWEST COST ROLL HANDLING MACHINE
- ❑ LOAD OR UNLOAD UNWINDS OR REWINDS AND OTHER NARROW WEB EQUIPMENT
- ❑ LIFT AND LOWER WITH OPERATED HAND WINCH
- ❑ 300 LBS (136 KG) CAPACITY UP TO 21" (533 MM) WIDTH
- ❑ FAST AND VERY EASY TO USE!
LIGHT WEIGHT, RUGGED STEEL CONSTRUCTION



MRH-300-PT MODIFICATIONS & OPTIONS

- ❑ TALLER / SHORTER MAST HEIGHT
- ❑ STRADDLE LEGS FOR USA PALLETS
- ❑ NARROW LEGS FOR EURO PALLETS
- ❑ STEEL-IT COATING
- ❑ FULL STAINLESS STEEL CONSTRUCTION
- ❑ SWIVEL CASTERS FRONT & BACK
- ❑ ANTI-TELESCOPING ATTACHMENT
- ❑ ADJUSTABLE TURNER ARM
- ❑ ROTATING PROBE FOR MATERIAL SAMPLING



OTHER MRH-300 DESIGNS

- ❑ STRAIGHT PROBE FOR HORIZONTAL HANDLING
- ❑ CRADLES PROBES
- ❑ FLAT TRAY
- ❑ "V" CRADLE
- ❑ ROTATING "V" CRADLE



ERH-200-PT

ELECTRIC ROLL HANDLERS

- ❑ 2-SPEED, WHISPER-QUIET ELECTRIC DRIVE
- ❑ 24 VDC BATTERY POWERED
- ❑ 200 LBS (90 KG) CAPACITY
- ❑ BATTERY CHARGER 115/230 VAC X 1
- ❑ SWAPPABLE BATTERY PACK FOR 24 X 7 OPERATION
- ❑ MRT MANUAL TURNER ARM
- ❑ FAST AND VERY USER FRIENDLY
- ❑ RUGGED, LIGHTWEIGHT CONSTRUCTION
- ❑ FLEXIBLE DESIGN - EASILY CUSTOMIZED
- ❑ PENDANT CONTROL



ERH-200-PT

MODIFICATIONS & OPTIONS

- ❑ SWIVEL CASTERS FRONT & BACK
- ❑ TALLER / SHORTER MASTS
- ❑ STRADDLE OR NARROW BASE FOR EURO PALLETS
- ❑ ADJUSTABLE HANDLEBAR
- ❑ HEAVY-DUTY BATTERY PACK
- ❑ ON / OFF BOARD CHARGER



ERH-200

OTHER TOOLING DESIGNS

- ❑ FLAT PLATFORM
- ❑ FIXED "V" CRADLE
- ❑ ROTATING "V" CRADLE
- ❑ SINGLE CENTER PROBE
- ❑ ADJUSTABLE DUAL PROBES
- ❑ LATERAL "V" CRADLE
- ❑ SOMETHING NEW?



ERH-400-PT

ELECTRIC ROLL HANDLERS

- ❑ 2-SPEED, WHISPER-QUIET ELECTRIC DRIVE
 - ❑ 24 VDC BATTERY POWERED
 - ❑ 400 LBS (180 KG) CAPACITY
 - ❑ BATTERY CHARGER 115/230 VAC X 1
 - ❑ SWAPPABLE BATTERY PACK FOR 24 X 7 OPERATION
 - ❑ POWERFUL ELECTRIC TURNER
 - ❑ FAST AND VERY USER FRIENDLY
 - ❑ RUGGED, LIGHTWEIGHT CONSTRUCTION
 - ❑ FLEXIBLE DESIGN - EASILY CUSTOMIZED
 - ❑ PENDANT CONTROL
-



ERH-400-PT

MODIFICATIONS & OPTIONS

- ❑ SWIVEL CASTERS FRONT & BACK
- ❑ TALLER / SHORTER MASTS
- ❑ STRADDLE OR NARROW BASE FOR EURO PALLETS
- ❑ ADJUSTABLE HANDLEBAR
- ❑ HEAVY-DUTY BATTERY PACK
- ❑ ON / OFF BOARD CHARGER



ERH-400

OTHER TOOLING DESIGNS

- ❑ FLAT PLATFORM
- ❑ FIXED "V" CRADLE
- ❑ ROTATING "V" CRADLE
- ❑ SINGLE CENTER PROBE
- ❑ ADJUSTABLE DUAL PROBES
- ❑ LATERAL "V" CRADLE
- ❑ SOMETHING NEW?



VCRD-1000 ROLL DOLLY SYSTEM

- ❑ VERY LOW COST!
- ❑ 1,000 LBS (906 KG)
- ❑ EASILY TRANSPORT ROLLS
- ❑ ROLLS CLEAN AND OFF THE FLOOR
- ❑ PREVENTS ROLL DAMAGE
- ❑ PERFECT FOR STAGING ROLLS AT PRESSES AND OTHER NARROW WEB MACHINES
- ❑ POWDER COATED HI-VIS YELLOW
- ❑ RUGGED STEEL CONSTRUCTION



VCRD-1000

MODIFICATIONS & OPTIONS

- ❑ STACKING POSTS
- ❑ FLOOR BRAKES
- ❑ STAINLESS STEEL FOR WASH DOWN OR CLEAN ROOMS
- ❑ HIGHER CAPACITIES TO 2,200 LBS (1000 KG)
- ❑ WIDER / LONGER DECKS
- ❑ VERTICAL STORAGE RACKS



HRC HYDRAULIC ROLL CARTS

- ❑ MANUAL & BATTERY POWERED HYDRAULICS
 - ❑ TOPS AVAILABLE AT 0° (SHOWN), 90° AND 360° (ROTATING)
 - ❑ 330, 550, 770, 1,100 & 1,750 LBS (100, 250, 350, 500 & 800 KG) CAPACITIES
 - ❑ HIGH QUALITY CONSTRUCTION
 - ❑ EASY TO USE
 - ❑ LONG TABLE & HIGH LIFT OPTIONS AVAILABLE
 - ❑ LOAD CANTILEVERED UNWINDS OR UNLOAD REWINDS
-



HRC MODIFICATIONS & OPTIONS

- TOP ORIENTATIONS
 - 0° (SHOWN)
 - 90°
 - 360° (ROTATING)
- STAINLESS STEEL TOPS
- RAISED TOPS
- LOW PROFILE CARTS
- DOUBLE SCISSOR HIGH LIFTS
- ROLLER "V" CRADLES



HEAVY DUTY ROLL TRUCKS SPEEDY-PT10X

- ❑ PT10X HIGH CAPACITY HYDRAULIC ROLL TURNER 1100 LBS (500 KG) CAPACITY
- ❑ 63" = 1600MM LIFT HEIGHT
- ❑ PRECISION LEVER CONTROLS ENABLE MOVEMENT BY THE MM
- ❑ 24 VDC DEEP CYCLE BATTERIES
- ❑ FULLY POWERED DRIVE
- ❑ FAST & EASY TO USE
- ❑ SAFEST WAY TO HANDLE LARGE ROLLS
- ❑ UNIVERSAL MANDREL HOLDER



SPEEDY-PT10X

MODIFICATIONS & OPTIONS

- ❑ HYDRAULIC SIDE SHIFT +/- 4" = 100 MM
- ❑ STRADDLE OR EURO PALLET LEGS
- ❑ ELECTRIC REMOTE RETRACT
- ❑ ROLL ELECTRIC PUSHER
- ❑ ANTI-TELESCOPING ATTACHMENT
- ❑ VIDEO CAMERA & MONITOR
- ❑ STROBE LIGHTS & HORN
- ❑ HEIGHT LIMIT STOP SWITCHES
- ❑ REVERSE TURNER FOR SMALL DIAMETERS



HEAVY DUTY ROLL TRUCKS

MASTER-PT10X

- ❑ PT10X HIGH CAPACITY HYDRAULIC ROLL TURNER 1100 LBS (500 KG) CAPACITY
 - ❑ 98" = 2500MM LIFT HEIGHT
 - ❑ PRECISION LEVER CONTROLS ENABLE MOVEMENT BY THE MM
 - ❑ 24 VDC DEEP CYCLE BATTERIES
 - ❑ FULLY POWERED DRIVE
 - ❑ FAST & EASY TO USE
 - ❑ SAFEST WAY TO HANDLE LARGE ROLLS
 - ❑ UNIVERSAL MANDREL HOLDER
-



MASTER-PT10X MODIFICATIONS & OPTIONS

- ❑ HYDRAULIC SIDE SHIFT +/- 4" = 100 MM
- ❑ STRADDLE OR EURO PALLET LEGS
- ❑ ELECTRIC REMOTE RETRACT
- ❑ ROLL ELECTRIC PUSHER
- ❑ ANTI-TELESCOPING ATTACHMENT
- ❑ VIDEO CAMERA & MONITOR
- ❑ STROBE LIGHTS & HORN
- ❑ HEIGHT LIMIT STOP SWITCHES
- ❑ REVERSE TURNER FOR SMALL DIAMETERS



HEAVY DUTY ROLL TRUCKS

DELTA-PT10X

- ❑ PT10X HIGH CAPACITY HYDRAULIC ROLL TURNER 1100 LBS (500 KG) CAPACITY
- ❑ 63" = 1600MM OR 98" = 2500 MM LIFT HEIGHTS
- ❑ PRECISION LEVER CONTROLS ENABLE MOVEMENT BY THE MM
- ❑ 24 VDC TRACTION BATTERY
- ❑ FULLY POWERED DRIVE
- ❑ FAST & EASY TO USE
- ❑ SAFEST WAY TO HANDLE VERY LARGE ROLLS
- ❑ UNIVERSAL MANDREL HOLDER



DELTA-PT10X

MODIFICATIONS & OPTIONS

- ❑ HYDRAULIC SIDE SHIFT +/- 4" = 100 MM
- ❑ STRADDLE OR EURO PALLET LEGS
- ❑ ELECTRIC REMOTE RETRACT
- ❑ ROLL ELECTRIC PUSHER
- ❑ ANTI-TELESCOPING ATTACHMENT
- ❑ VIDEO CAMERA & MONITOR
- ❑ STROBE LIGHTS & HORN
- ❑ HEIGHT LIMIT STOP SWITCHES
- ❑ REVERSE TURNER FOR SMALL DIAMETERS



HEAVY DUTY ROLL TRUCKS

DELTA-PT20X

- ❑ HIGHEST CAPACITY HYDRAULIC ROLL TURNER WITH UP TO 2200 LBS (1000 KG) CAPACITY
- ❑ 63" = 1600MM OR 98" = 2500 MM LIFT HEIGHTS
- ❑ PRECISION LEVER CONTROLS ENABLE MOVEMENT BY THE MM
- ❑ 24 VDC TRACTION BATTERY
- ❑ FULLY POWERED DRIVE
- ❑ FAST & EASY TO USE
- ❑ SAFEST WAY TO HANDLE VERY LARGE ROLLS
- ❑ UNIVERSAL MANDREL HOLDER



DELTA-PT20X

MODIFICATIONS & OPTIONS

- ❑ HYDRAULIC SIDE SHIFT +/- 4" = 100 MM
- ❑ STRADDLE OR EURO PALLET LEGS
- ❑ ELECTRIC REMOTE RETRACT
- ❑ ROLL ELECTRIC PUSHER
- ❑ ANTI-TELESCOPING ATTACHMENT
- ❑ VIDEO CAMERA & MONITOR
- ❑ STROBE LIGHTS & HORN
- ❑ HEIGHT LIMIT STOP SWITCHES



HEAVY DUTY ROLL TRUCKS

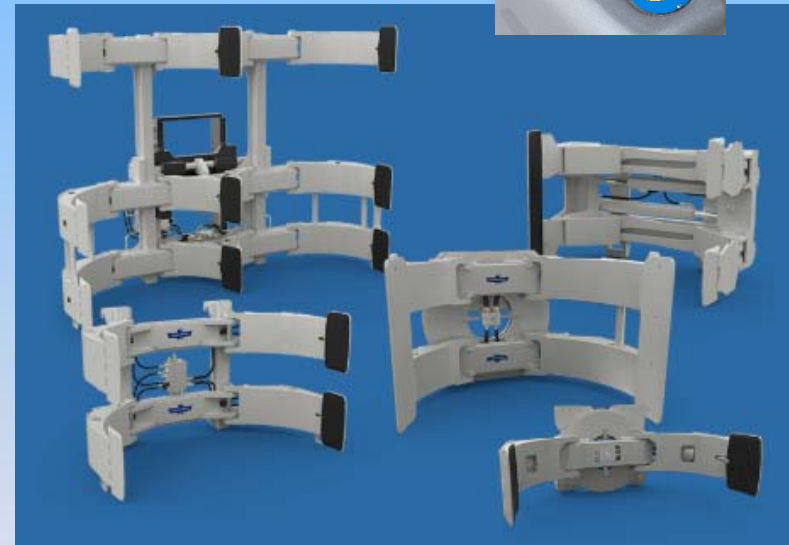
DELTA OD CLAMP

- ❑ HIGHEST CAPACITY HYDRAULIC ROLL TURNER WITH UP TO 2200 LBS (1000 KG) CAPACITY
 - ❑ CASCADE CLAMP WITH ROTATOR FOR TELESCOPING MATERIALS
 - ❑ 63" = 1600MM LIFT HEIGHTS
 - ❑ PRECISION LEVER CONTROLS ENABLE MOVEMENT BY THE MM
 - ❑ 24 VDC TRACTION BATTERY
 - ❑ FULLY POWERED DRIVE
 - ❑ FAST & EASY TO USE
 - ❑ SAFE WAY TO HANDLE VERY LARGE ROLLS
-



DELTA OD CLAMP MODIFICATIONS & OPTIONS

- ❑ HYDRAULIC SIDE SHIFT +/- 4"
= 100 MM
- ❑ NUMEROUS PAD TYPES,
SIZES & GRIPPING SURFACES
- ❑ OFFSET ARM OR EQUAL ARM
CLAMPS
- ❑ STRADDLE OR EURO PALLET
LEGS
- ❑ VIDEO CAMERA & MONITOR
- ❑ STROBE LIGHTS & HORN



HEAVY DUTY ROLL TRUCKS ROLL CRADLES

- ❑ SPEEDY, MASTER & DELTA TRUCKS
 - ❑ UP TO 2200 LBS (1000 KG)
CAPACITY
 - ❑ FOR LOADING & UNLOADING
UNWINDS / REWINDS
 - ❑ 63" = 1600MM LIFT HEIGHT
 - ❑ PRECISION LEVER CONTROLS
 - ❑ 24 VDC DEEP CYCLE OR TRACTION
BATTERY (DELTA ONLY)
 - ❑ FULLY POWERED DRIVE
 - ❑ FAST & EASY TO USE
 - ❑ TILTING FRONT LIP - LOAD FROM
PALLET
-



HEAVY DUTY ROLL TRUCKS DISCOVERY TE

- ❑ SAFE WAY TO TRANSPORT VERY LARGE ROLLS
- ❑ UP TO 2,500 KG = 5,500 LBS CAPACITY
- ❑ V-CRADLE TOP
- ❑ OPTIONAL ROTATING TOP
- ❑ LOAD UNWINDS OR UNLOAD REWINDS
- ❑ LARGE INDUSTRIAL TRACTION BATTERY



HRUP-5000 HYDRAULIC UPENDERS

- ❑ HIGHEST CAPACITY ROLL TURNER...TURNS INDIVIDUAL ROLLS OR ENTIRE PALLET!
- ❑ FAST & PRODUCTIVE
- ❑ 5000 LBS (2270 KG) CAPACITY
- ❑ 230 / 460 VAC X 3 POWER
- ❑ SEMI OR FULLY AUTOMATIC
- ❑ EASILY CUSTOMIZED
- ❑ SAFEST WAY TO HANDLE LARGE ROLLS



HRUP-5000

MODIFICATIONS & OPTIONS

- ❑ FLAT TABLES
- ❑ SINGLE OR MULTIPLE "V" CRADLES
- ❑ CONVEYOR ROLLER BEDS
- ❑ HYDRAULIC PUSHER CENTERS THE ROLLS ON THE PALLET
- ❑ FORK POCKETS TO MOVE UPENDER
- ❑ WIRELESS, PENDANT OR FOOT PEDAL CONTROLS



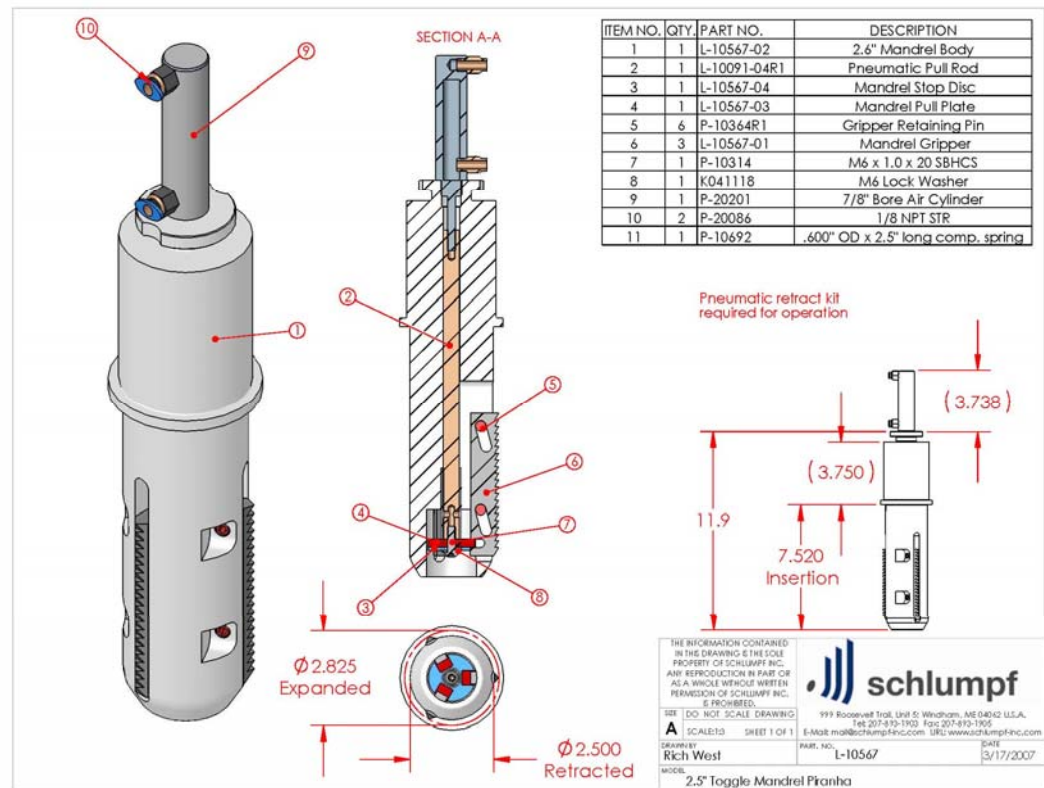
ACCESSORIES & OPTIONS FOR YOUR EQUIPMENT

SCHLUMPF OFFERS A WIDE RANGE OF
ACCESSORIES AND OPTIONS TO MAKE
HOIST BASED AND MOBILE EQUIPMENT:

- ❑ FASTER AND MORE USER FRIENDLY
 - ❑ LAST LONGER WITH FEWER REPAIRS
 - ❑ CREATE MINIMAL DAMAGE
 - ❑ THE IMPOSSIBLE POSSIBLE!
-

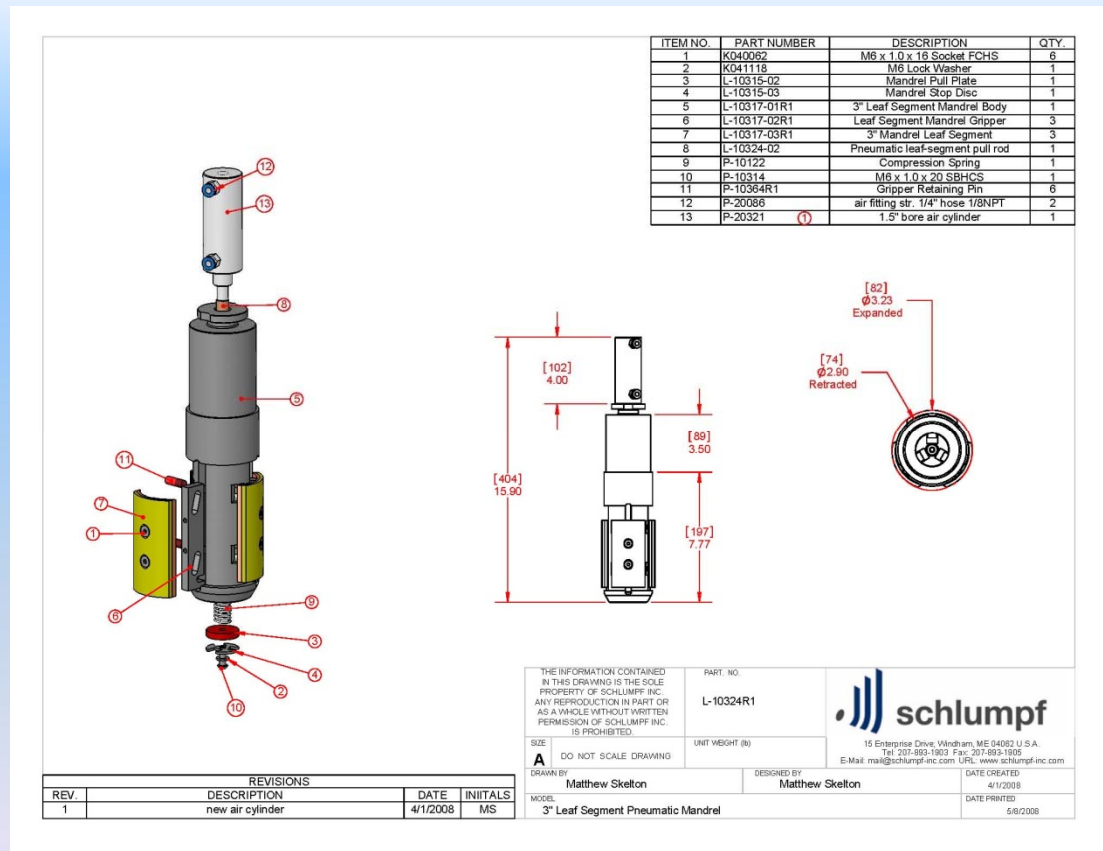
MANDREL MODIFICATIONS, OPTIONS & ACCESSORIES

MANDREL WITH
PNEUMATIC EXPAND
& RETRACT.
INCLUDES BLOCKING
VALVE TO PREVENT
LOAD LOSS IF
PRESSURE IS
REDUCED OR LOST



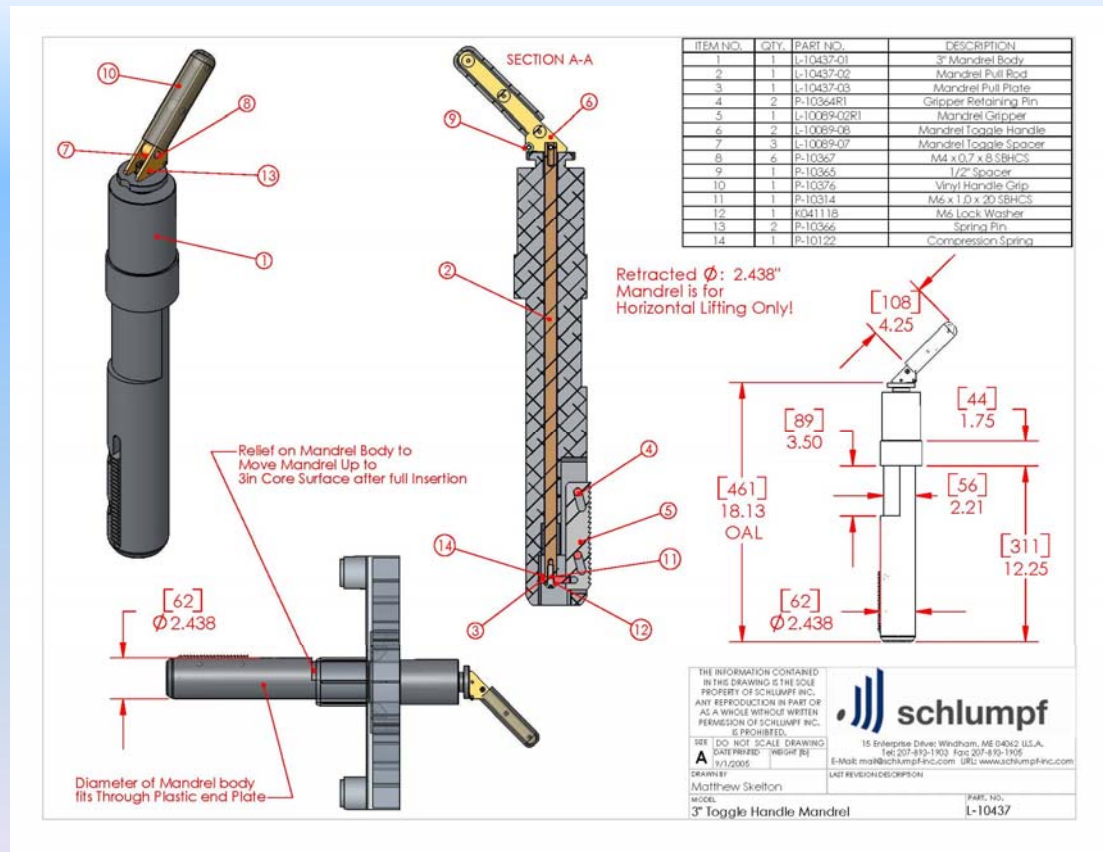
MANDREL MODIFICATIONS, OPTIONS & ACCESSORIES

3" MANDREL WITH PNEUMATIC EXPAND & RETRACT AND LEAF TYPE GRIPPERS. INCLUDES BLOCKING VALVE TO PREVENT LOAD LOSS IF PRESSURE IS REDUCED OR LOST



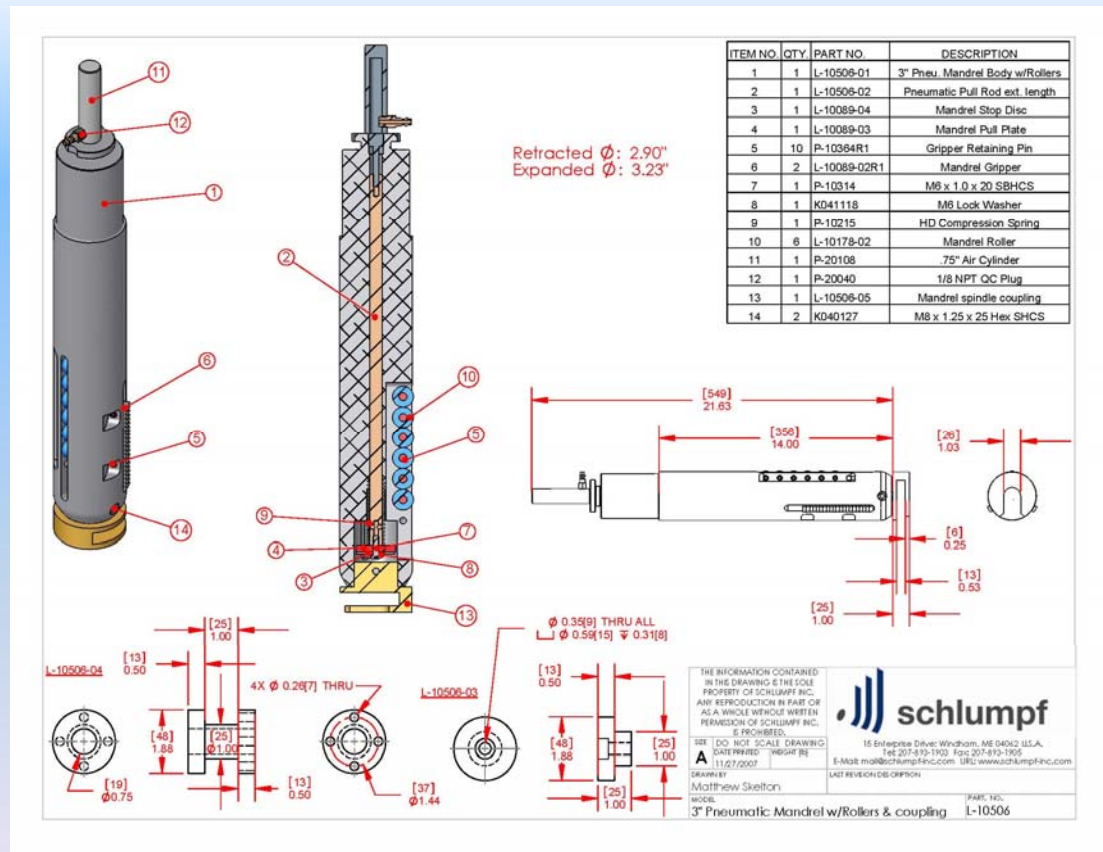
MANDREL MODIFICATIONS, OPTIONS & ACCESSORIES

3" MANDREL WITH
TOGGLE RETRACT.
BODY
CONFIGURATION
ALLOWS
PLACEMENT OF
ROLL CRADLE PACK
PLATE WHEN
REMOVING FROM
REWIND



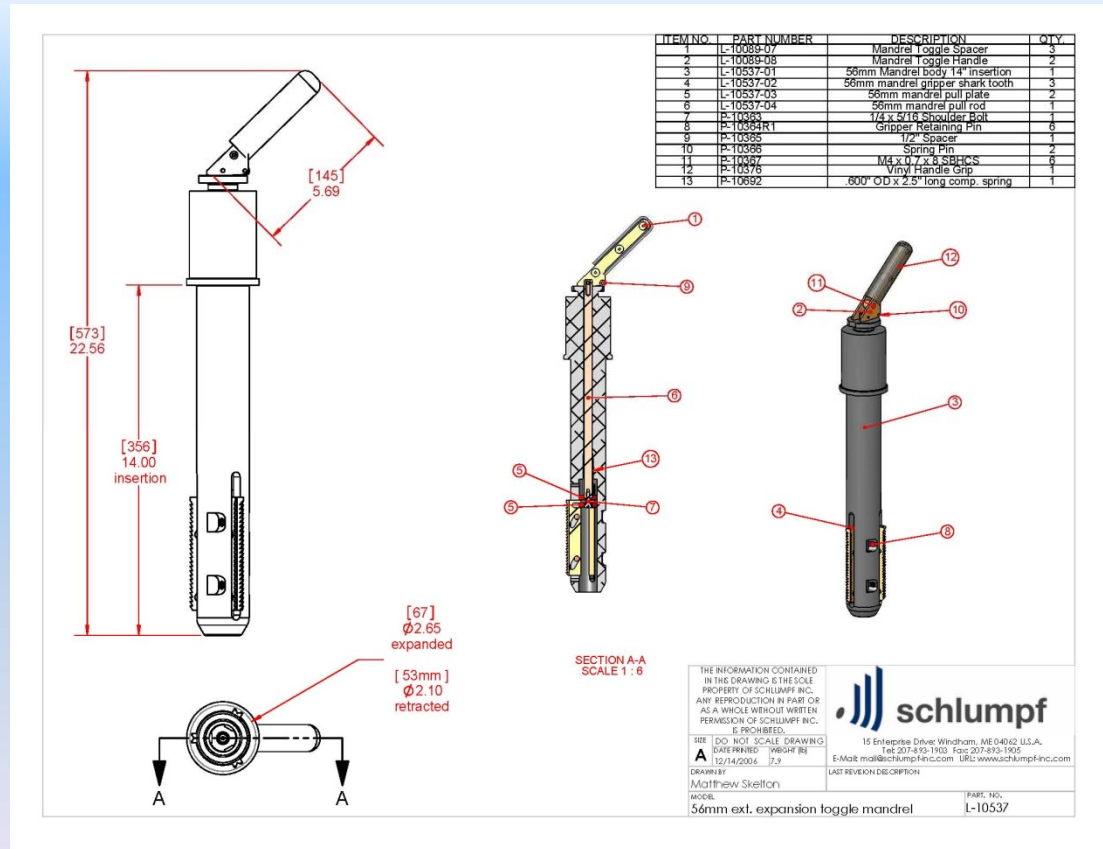
MANDREL MODIFICATIONS, OPTIONS & ACCESSORIES

3" MANDREL WITH
PNEUMATIC
RETRACT. INCLUDES
ROLLERS FOR EASE
OF TRANSFER AND
REWIND SHAFT
COUPLINGS



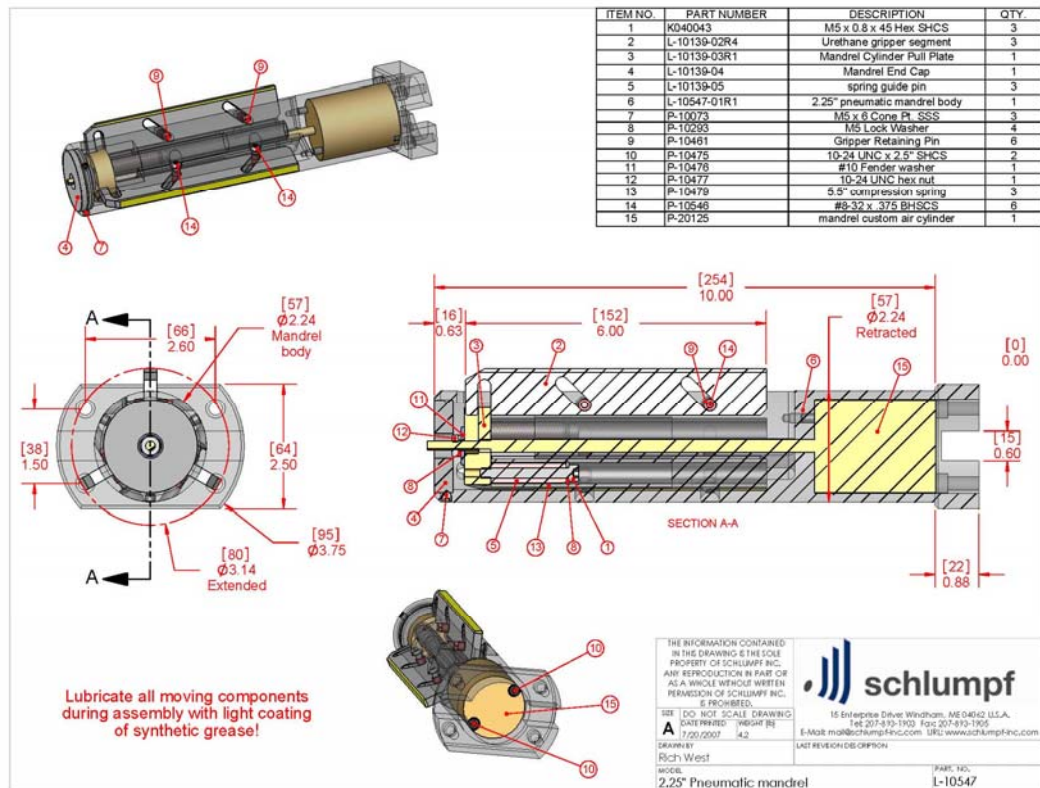
MANDREL MODIFICATIONS, OPTIONS & ACCESSORIES

SMALL DIAMETER
BODY - 56 MM
MANDREL WITH
WIDE (14 MM)
EXPANSION RANGE



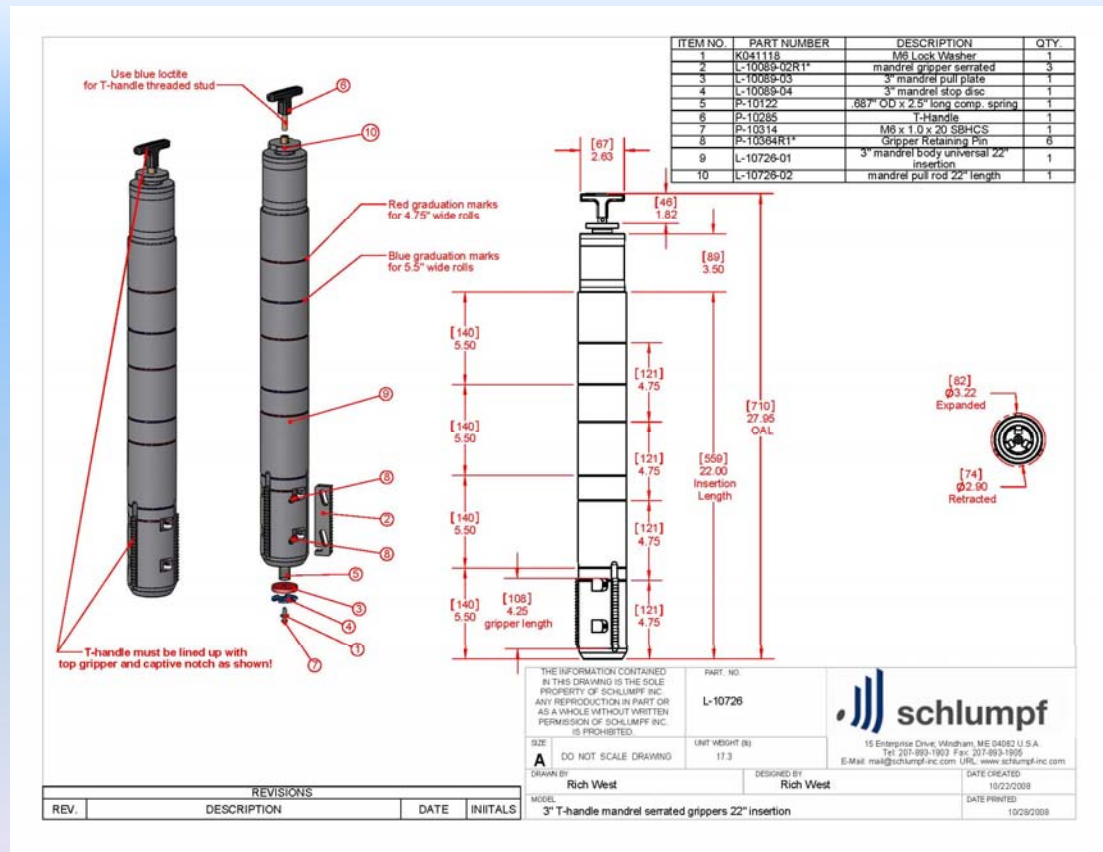
MANDREL MODIFICATIONS, OPTIONS & ACCESSORIES

3" MANDREL FOR LIFT
& TURN ROBOTIC
APPLICATION WITH
PNEUMATIC EXPAND
/ RETRACT AND WIDE
(23 MM) EXPANSION
RANGE



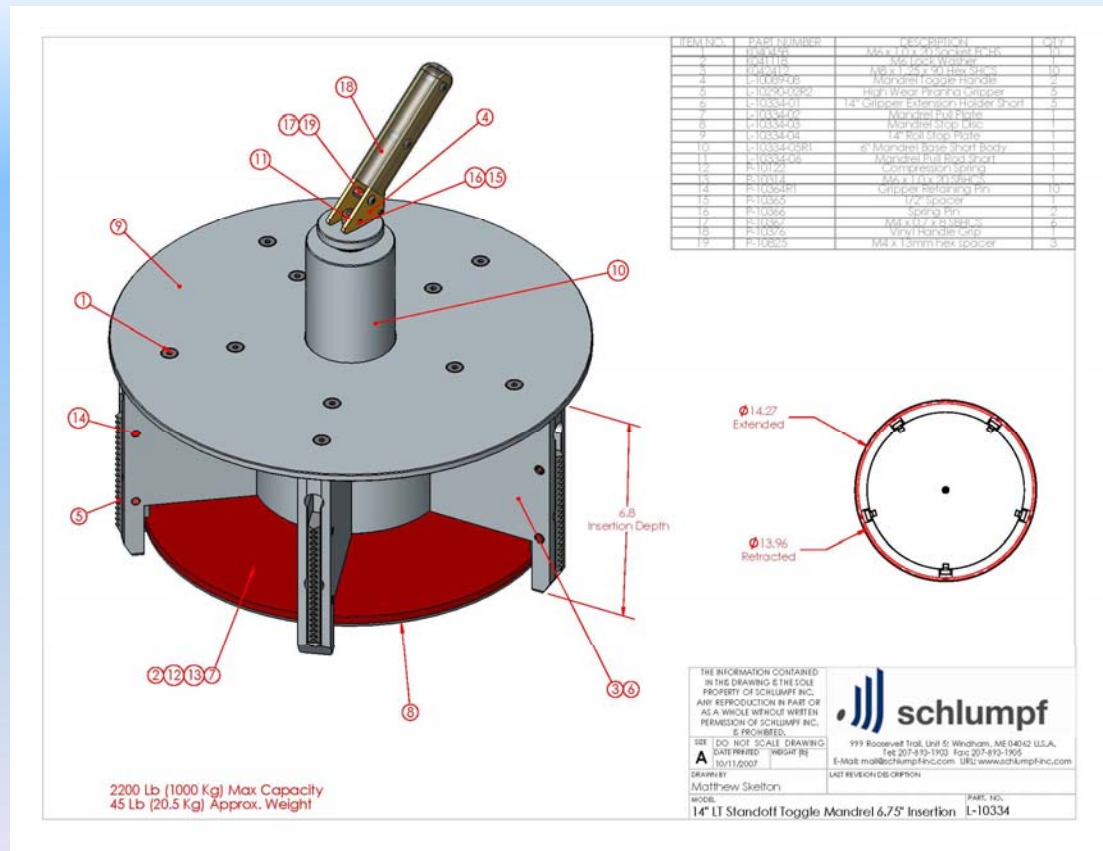
MANDREL MODIFICATIONS, OPTIONS & ACCESSORIES

3" MANDREL WITH
GRADUATION MARKS
TO SET INSERTION
DEPTH



MANDREL MODIFICATIONS, OPTIONS & ACCESSORIES

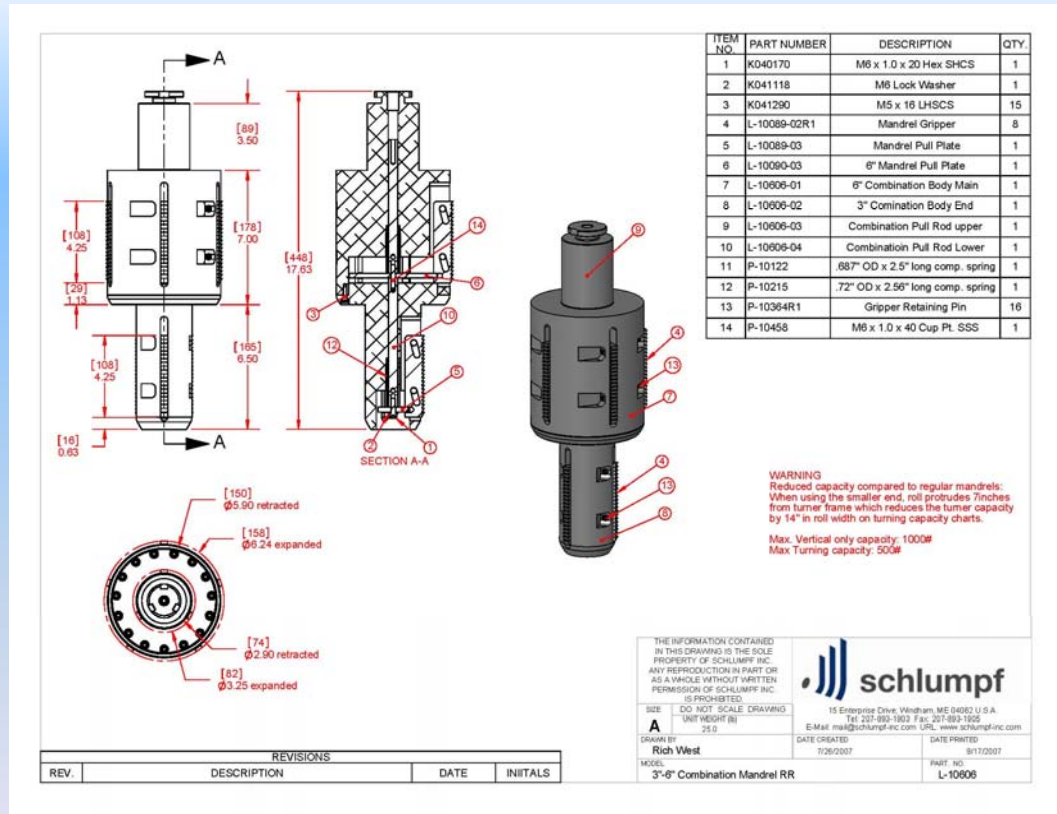
14" (355 MM)
MANDREL WITH
LIGHTWEIGHT
STAND-OFF DESIGN
FOR VERTICAL
LIFTING



MANDREL MODIFICATIONS, OPTIONS & ACCESSORIES

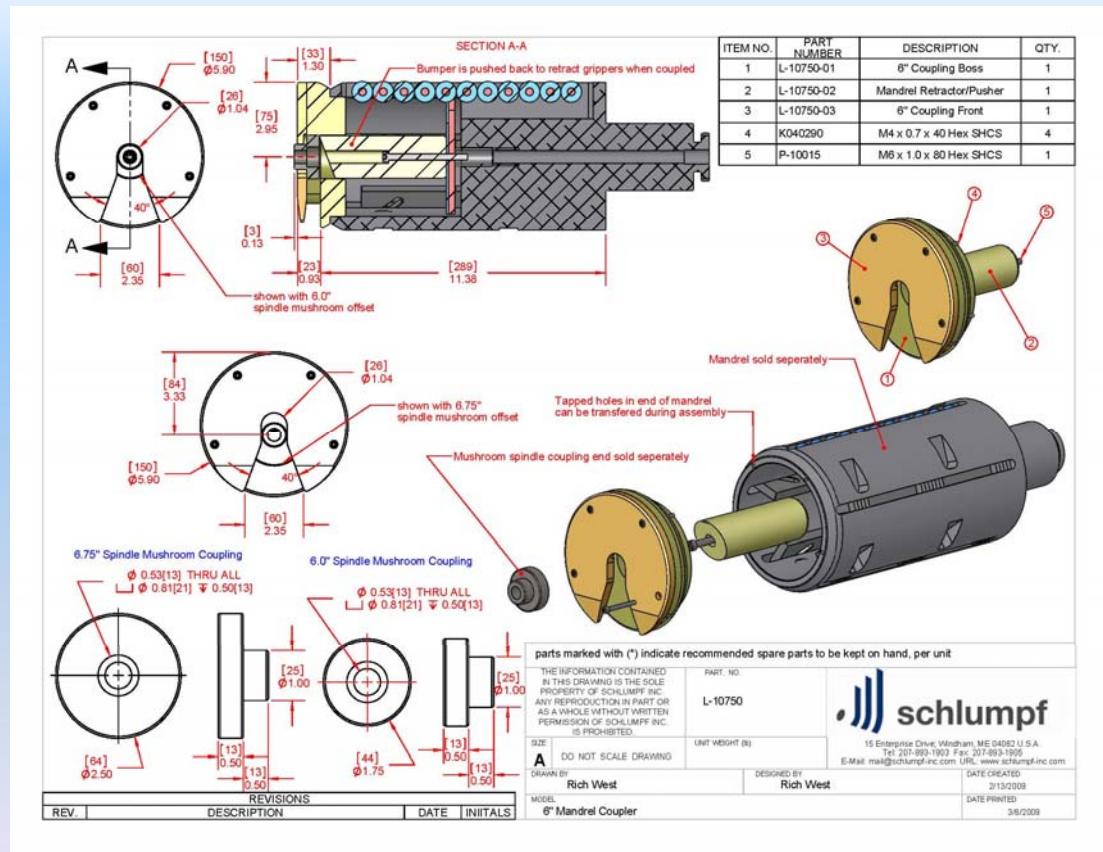
COMBINATION 3" & 6"
MANDREL FOR
CENTER LIFTING AND
LIGHT-DUTY TURNING
APPLICATIONS.

- REMOTE
RETRACT OR
MANUAL
RETRACT WITH T
OR TOGGLE
HANDLE



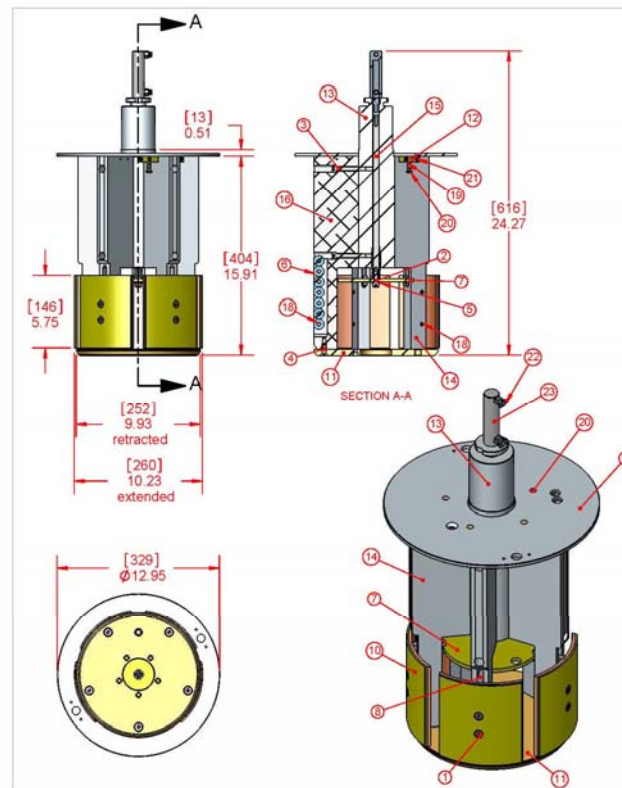
MANDREL MODIFICATIONS, OPTIONS & ACCESSORIES

6" MANDREL WITH
TRANSFER ROLLERS,
SHAFT COUPLING
AND BUMP RETRACT
FOR ERH-300-P
APPLICATION



MANDREL MODIFICATIONS, OPTIONS & ACCESSORIES

10" MANDREL WITH
LIGHTWEIGHT
STANDOFF DESIGN,
TRANSFER ROLLERS
AND INTERNAL
COUPLING FOR
LOADING FROM
SCHLUMPF DOFFING
DEVICE



ITEM NO.	PART NUMBER	DESCRIPTION	QTY.
1	K040082	M8 x 1.0 x 16 Socket FCHS	8
2	K040127	M8 x 1.25 x 25 Hex SHCS	1
3	K040134	M8 x 1.25 x 60 Hex SHCS	10
4	K040467	M8 x 1.25 x 25 Socket FCHS	5
5	K041478	M8 Lock Washer	1
6	L-10178-02	Mandrel Roller	7
7	L-10536-03	Mandrel Pull Plate	1
8	L-10536-04	Custom Mandrel Gripper	3
9	L-10536-06	Roll Stop Plate	1
10	L-10536-08	6" Mandrel Leaf Segment	4
11	L-10536-09	Front Cover Plate	1
12	L-10536-16	Spring Block	5
13	L-10553-01	Mandrel Base Body	1
14	L-10553-02	Gripper Extension Holder	3
15	L-10553-03	Pneumatic Pull Rod	1
16	L-10553-04	Roller Extension Holder	1
17	P-10215	HD Compression Spring	1
18	P-10364R1	Gripper Retaining Pin	15
19	P-10814	Compression Spring .360	5
20	P-10926	Spring Bolt	5
21	P-10927	M4 x 20 SHCS	10
22	P-20086	1/8 NPT STR	2
23	P-20201	7/8" Bore Air Cylinder	1

THE INFORMATION CONTAINED
IN THIS DRAWING IS THE SOLE
PROPERTY OF SCHLUMPF INC.
ANY REPRODUCTION IN PART OR
AS A WHOLE WITHOUT WRITTEN
PERMISSION OF SCHLUMPF INC.
IS PROHIBITED.

DATE: 2/12/2007
DRAWN BY: Rich West
CHECKED BY: [Signature]

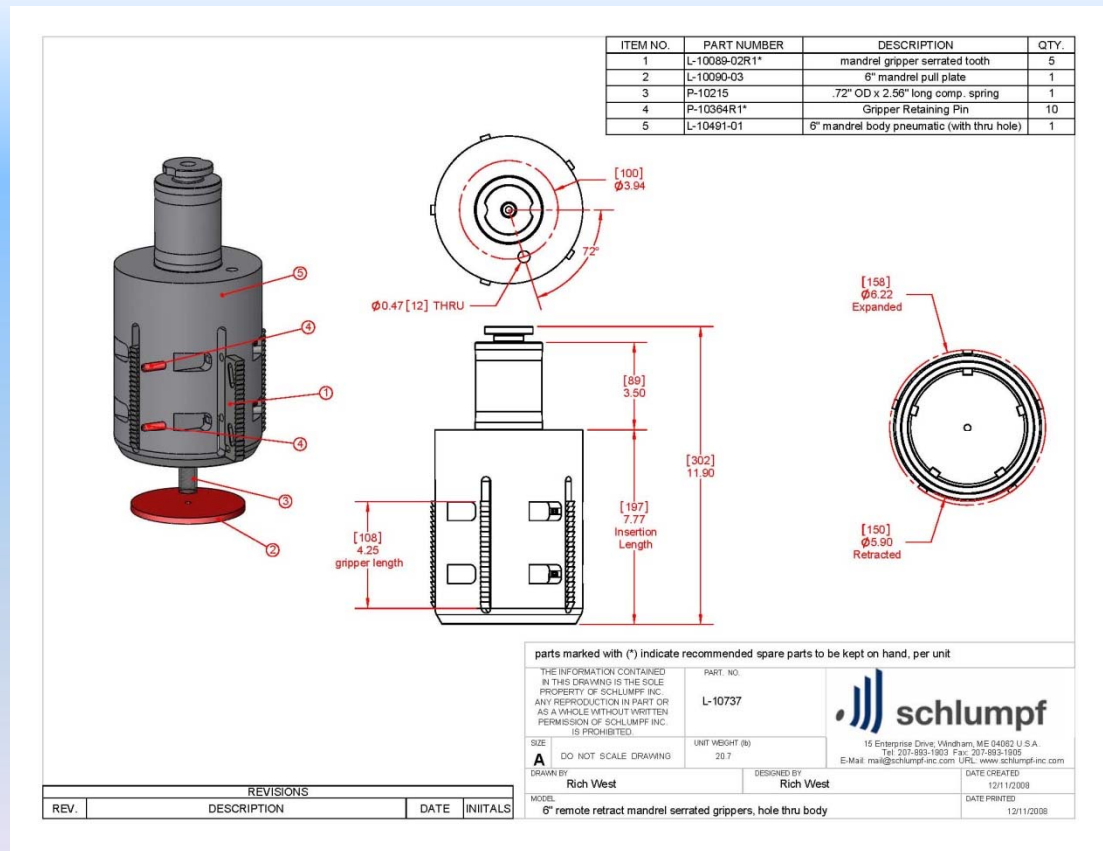
MODEL: 10" LT Standoff Leaf Mandrel

schlumpf
15 Bridgeport Drive, Waltham, MA 02452, U.S.A.
Tel: 207-812-1300 Fax: 207-812-1305
E-Mail: mail@schlumpf-inc.com URL: www.schlumpf-inc.com
LAST REVISION: 02-01-2007

PART NO.: L-10553

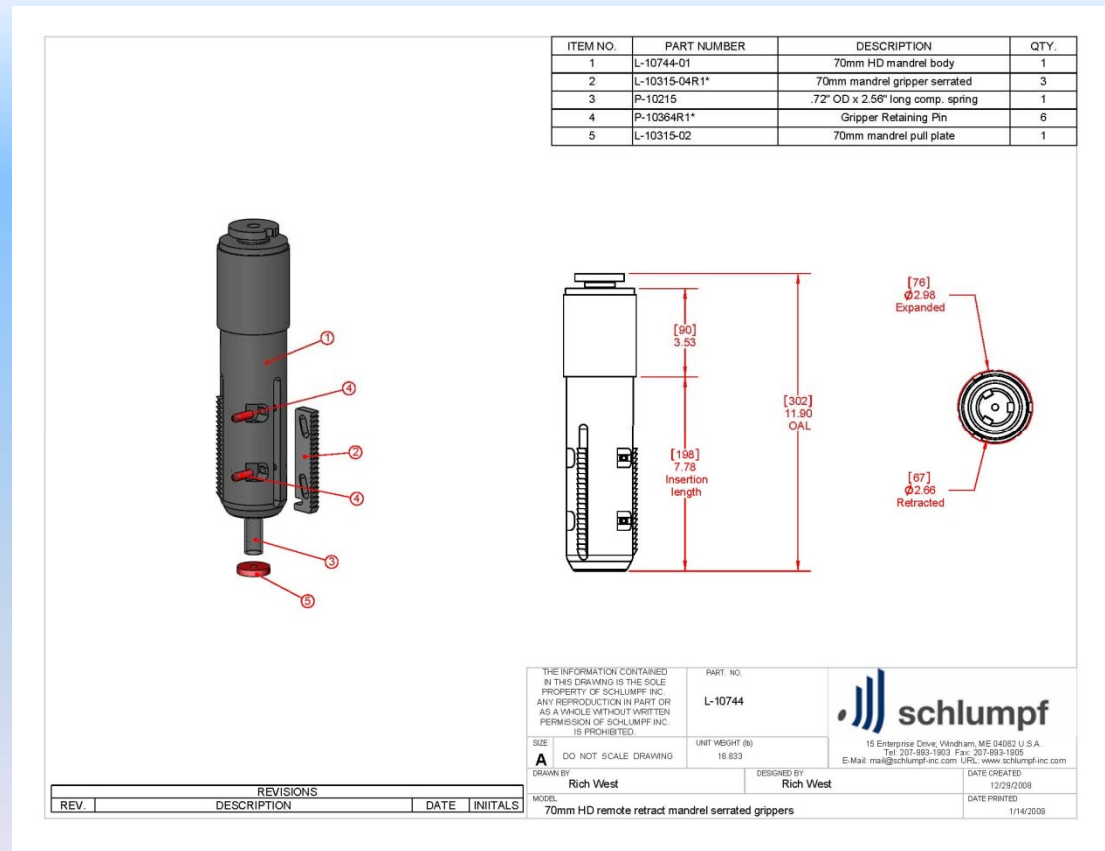
MANDREL MODIFICATIONS, OPTIONS & ACCESSORIES

6" MANDREL WITH PROVISIONS FOR VISION SENSOR FOR ROBOTIC LOADING AND STACKING APPLICATION



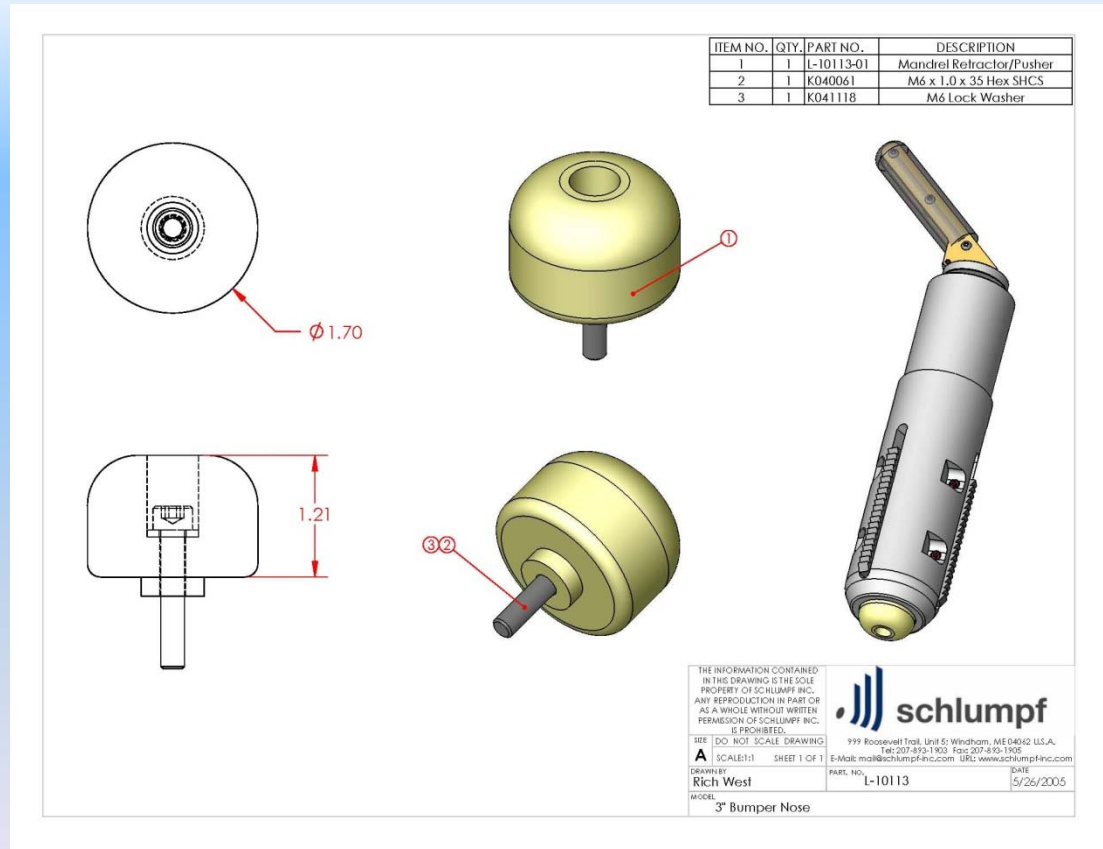
MANDREL MODIFICATIONS, OPTIONS & ACCESSORIES

70 MM MANDREL
WITH ALLOY STEEL
BODY FOR HEAVY-
DUTY LIFTING AND
TURNING
APPLICATIONS WITH
PT10X TOOLING



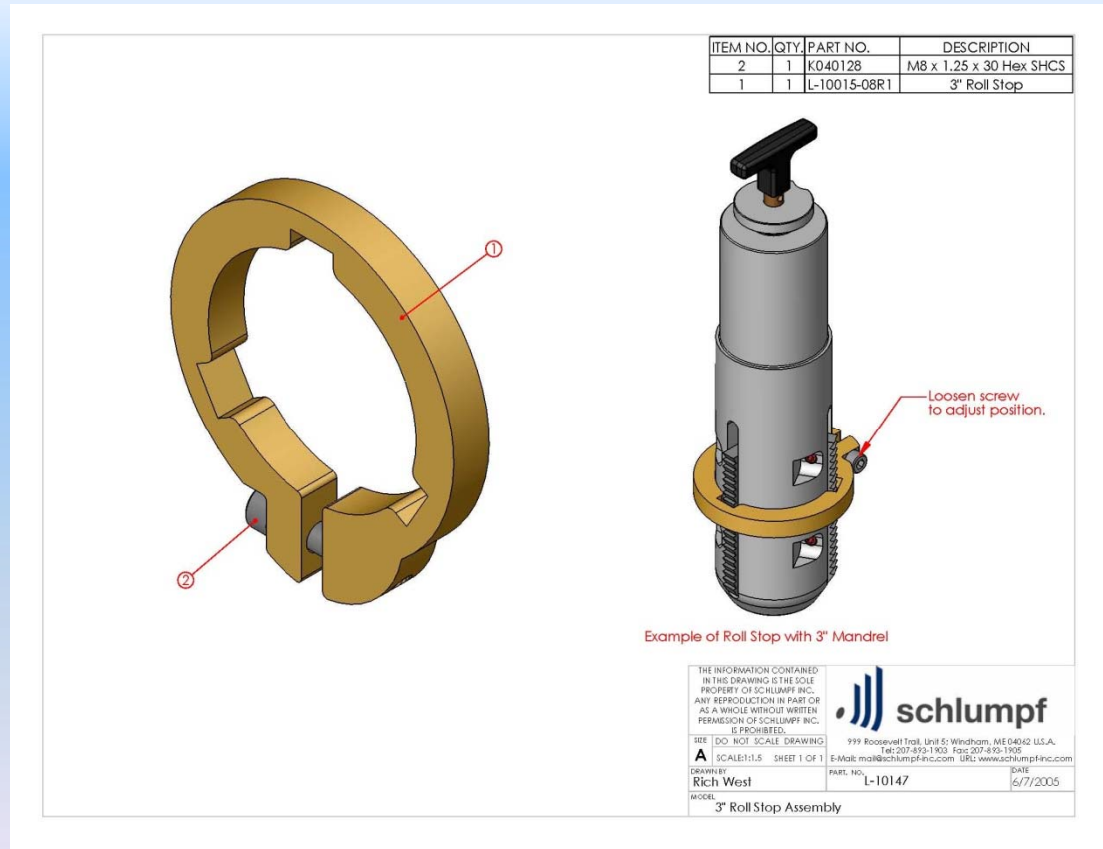
MANDREL MODIFICATIONS, OPTIONS & ACCESSORIES

MANDREL BUMPER
TO RETRACT
MANDREL GRIPPERS
WHEN PUSHED
AGAINST UNWIND
OR REWIND SHAFT



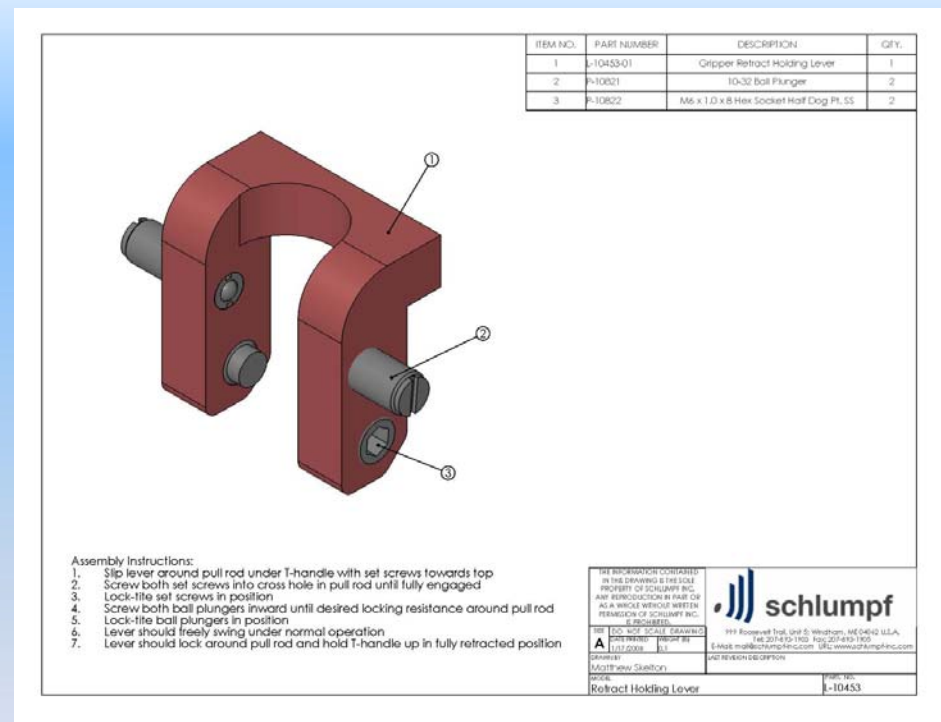
MANDREL MODIFICATIONS, OPTIONS & ACCESSORIES

ADJUSTABLE CORE
STOP REGULATES
INSERTION DEPTH OF
MANDREL INTO
CORE. AVAILABLE
FOR ANY MANDREL
SIZE



MANDREL MODIFICATIONS, OPTIONS & ACCESSORIES

TOGGLE LOCK KEEPS GRIPPERS IN RETRACTED POSITION FOR EASIER LOADING AND UNLOADING IN CORE HORIZONTAL POSITION. NOTE! REQUIRES CUSTOMER DISCLAIMER - SCHLUMPF IS NOT RESPONSIBLE FOR DAMAGE OR INJURY IF ROLL IS TURNED TO CORE VERTICAL WHEN TOGGLE IS LOCKED IN RETRACTED POSITON! FOR T-HANDLE & TOGGLE MANDRELS



ACCESSORIES FOR HOIST BASED & MOBILE EQUIPMENT

- ❑ ANTI-TELESCOPING ATTACHMENT. FITS ALL SCHLUMPF MOBILE & HOIST BASED EQUIPMENT.
 - ❑ VARIABLE PRESSURE TO PREVENT MATERIAL DAMAGE
 - ❑ EASY TO USE. FAST TO SET AND RELEASE
 - ❑ CAN BE USED IN TANDEM FOR MODERATE TELESCOPING.
- NOTE! MAY NOT PREVENT CORE PULL-OUT ON VERY LOOSELY WOUND ROLLS
-



- ❑ LIFT RING WITH SWIVEL HOOK
- ❑ UNIVERSAL DESIGN FITS ALL MOBILE & HOIST BASED EQUIPMENT
- ❑ USE FOR LIFTING DIES AND OTHER MACHINE PARTS

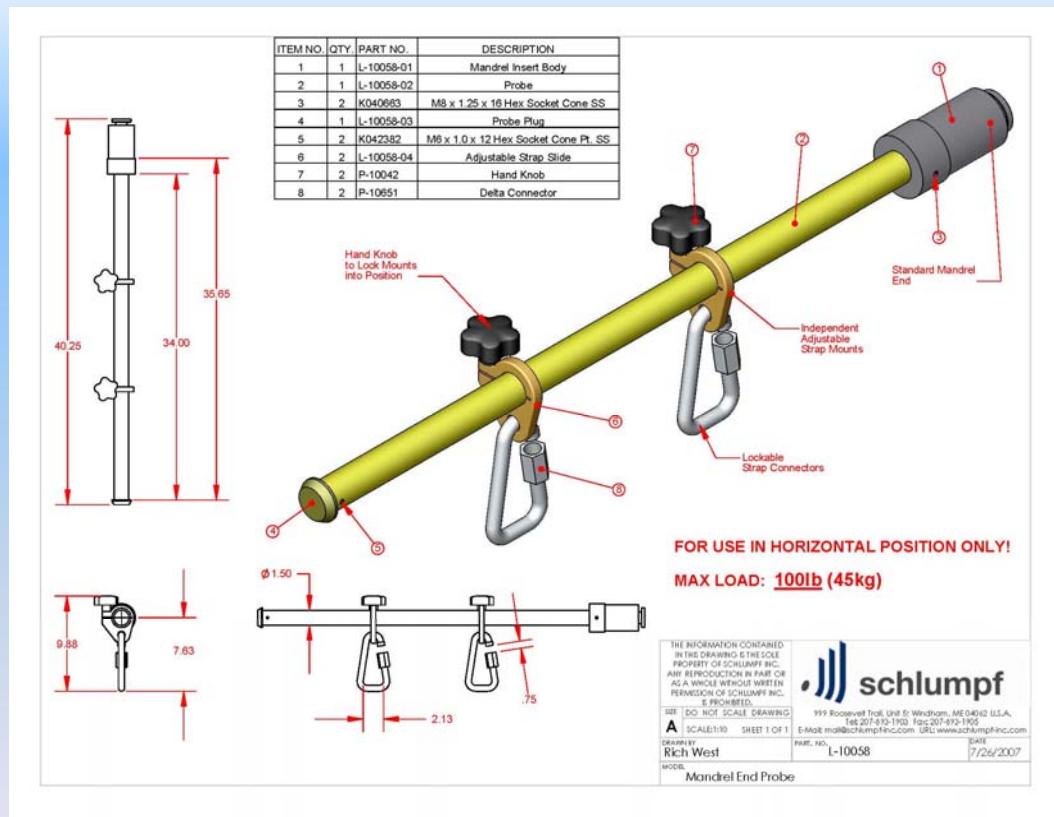


ACCESSORIES FOR HOIST BASED & MOBILE EQUIPMENT

□ LIFTER-SPREADER BAR

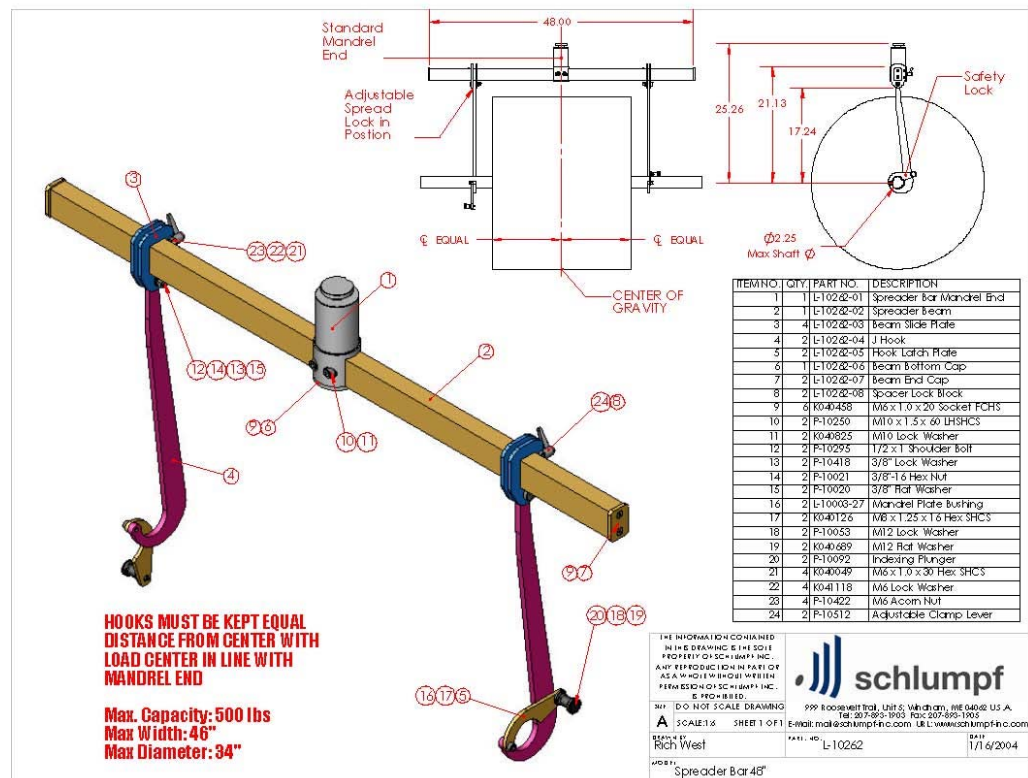
□ FITS ALL MOBILE EQUIPMENT

□ USE FOR LIFTING DIES AND OTHER MACHINE PARTS



ACCESSORIES FOR HOIST BASED & MOBILE EQUIPMENT

- ❑ LIFTER-SPREADER BAR
- ❑ UNIVERSAL DESIGN FITS ALL MOBILE EQUIPMENT
- ❑ USE FOR LIFTING ROLLS VIA WINDING SHAFT DIES AND OTHER MACHINE PARTS

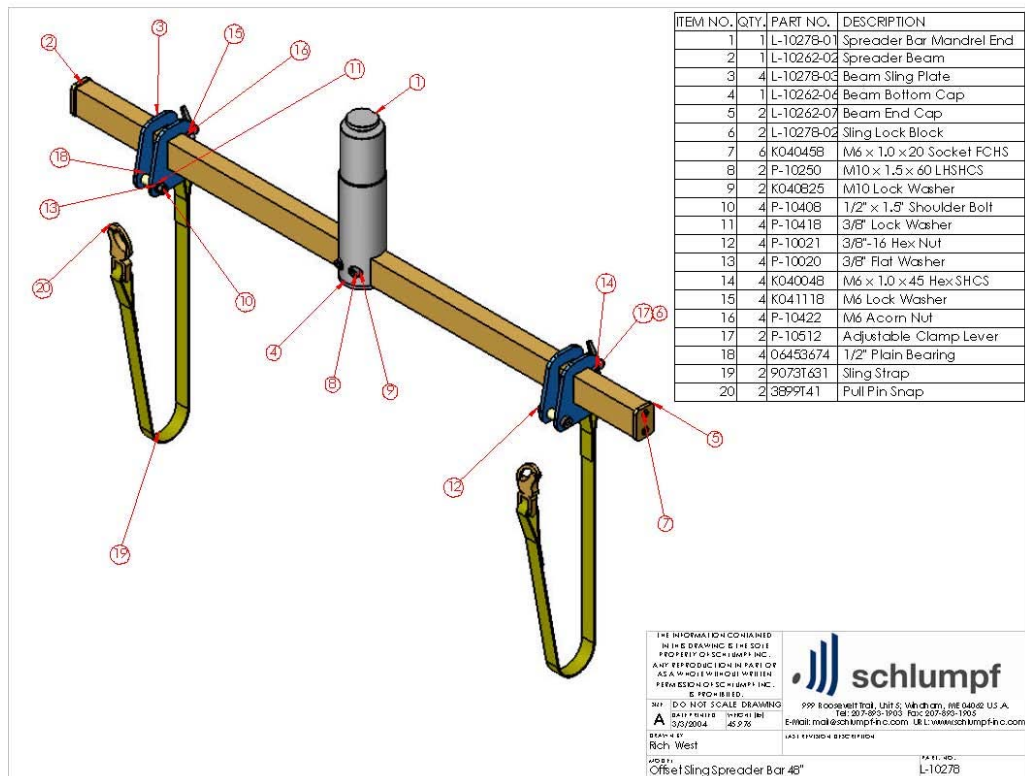


ACCESSORIES FOR HOIST BASED & MOBILE EQUIPMENT

❑ LIFTER-SPREADER BAR

❑ UNIVERSAL DESIGN FITS ALL MOBILE EQUIPMENT

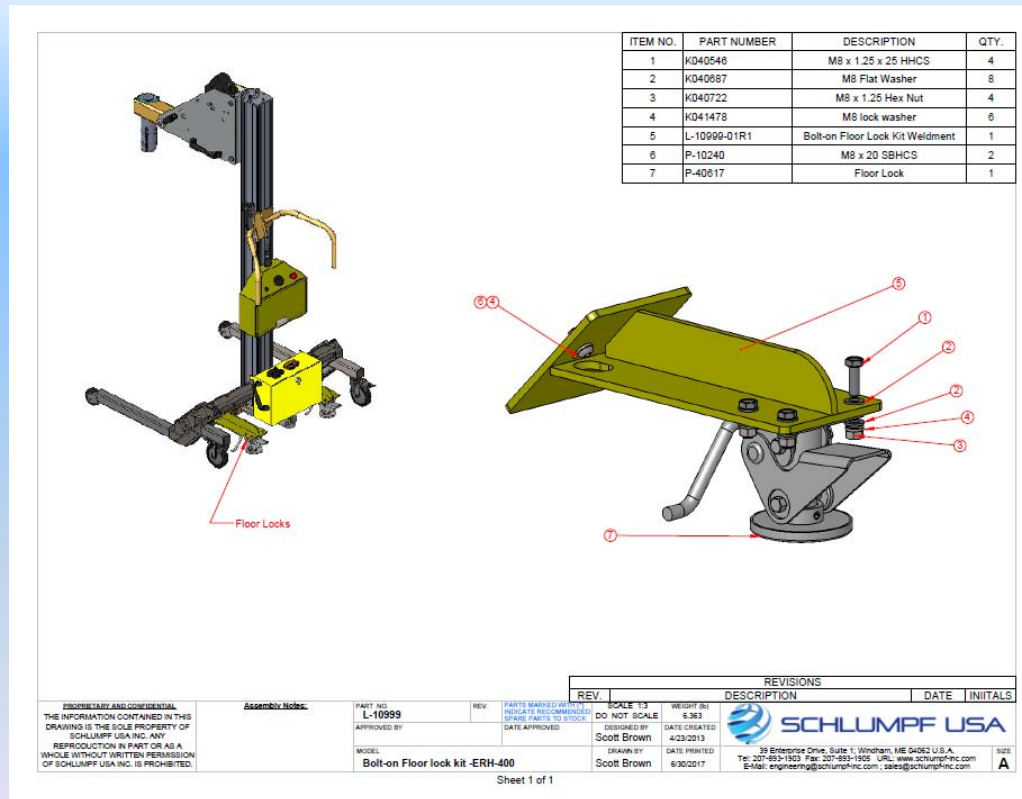
❑ USE FOR LIFTING ROLLS VIA WINDING SHAFT DIES AND OTHER MACHINE PARTS



ACCESSORIES FOR MOBILE EQUIPMENT

BOLT-ON FLOOR LOCKS
FOR EXTRA HOLDING
POWER.

□ DESIGNS FOR ERH
200, ERH-400 AND MRH
300 & 500



ACCESSORIES FOR MOBILE EQUIPMENT

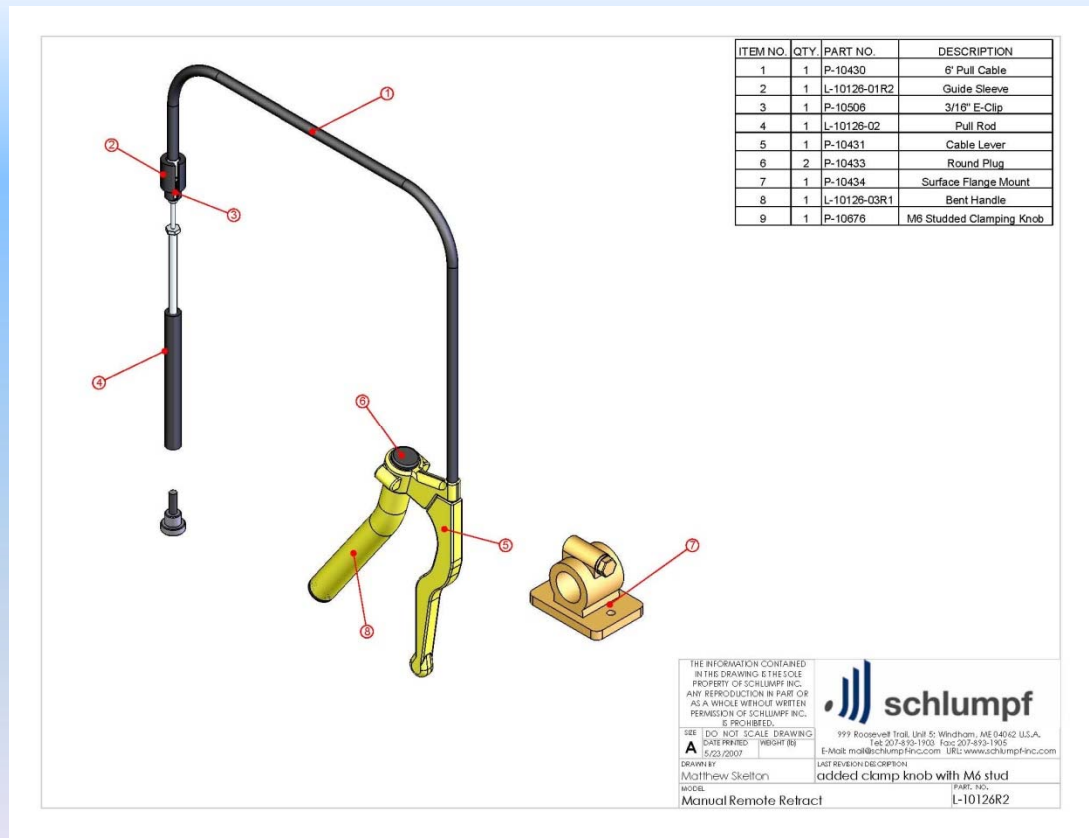
- ❑ ELECTRIC REMOTE MANDREL GRIPPER RETRACT (ERR)
- ❑ POWERED BY MICRO AIR COMPRESSOR
- ❑ UNIVERSAL DESIGN FITS ALL MOBILE & HOIST BASED EQUIPMENT
- ❑ WHILE THIS ITEM IS OPTIONAL, IT TRULY IS A MUST HAVE ITEM FOR ERT AND MOST ERH APPLICATIONS
- ❑ AIR CYLINDER IS NOT POWERFUL ENOUGH TO RETRACT GRIPPERS WHILE STILL UNDER LOAD



ACCESSORIES FOR HOIST BASED & MOBILE EQUIPMENT

MANUAL REMOTE MANDREL GRIPPER RETRACT

- ❑ FITS ALL MOBILE & HOIST BASED EQUIPMENT
- ❑ LESS EXPENSIVE THAN ELECTRIC REMOTE RETRACT (ERR)



ACCESSORIES FOR MOBILE EQUIPMENT

24 VOLT DC BATTERY PACK

- ❑ SEALED NON-SPILABLE LEAD-ACID BATTERIES
- ❑ CAN BE CHANGED IN SECONDS TO KEEP ERH MACHINES RUNNING 24 X 7.
- ❑ SLIM PACK FOR MINIMUM WEIGHT OR FULL SIZED PACK WITH MORE POWER
- ❑ USE WITH ANY AUTOMATIC CHARGER



ACCESSORIES FOR MOBILE EQUIPMENT

SIDE SHIFT

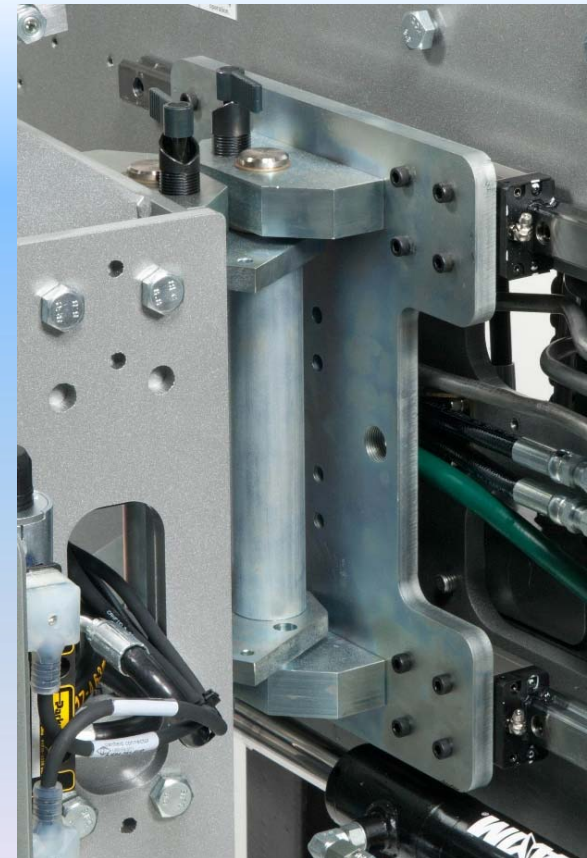
- ❑ ALLOWS ALIGNING TOOLING WITH DESTINATION WITHOUT REPOSITIONING THE MACHINE
- ❑ MANUAL, ELECTRIC OR HYDRAULIC – MANUAL OR ELECTRIC ONLY FOR TRAVEL OVER $\pm 4" = 100 \text{ MM}$
- ❑ FOR ALL TRUCK MODELS. LOAD LIMITS APPLY.



ACCESSORIES FOR MOBILE EQUIPMENT

PIVOTING TOOLING

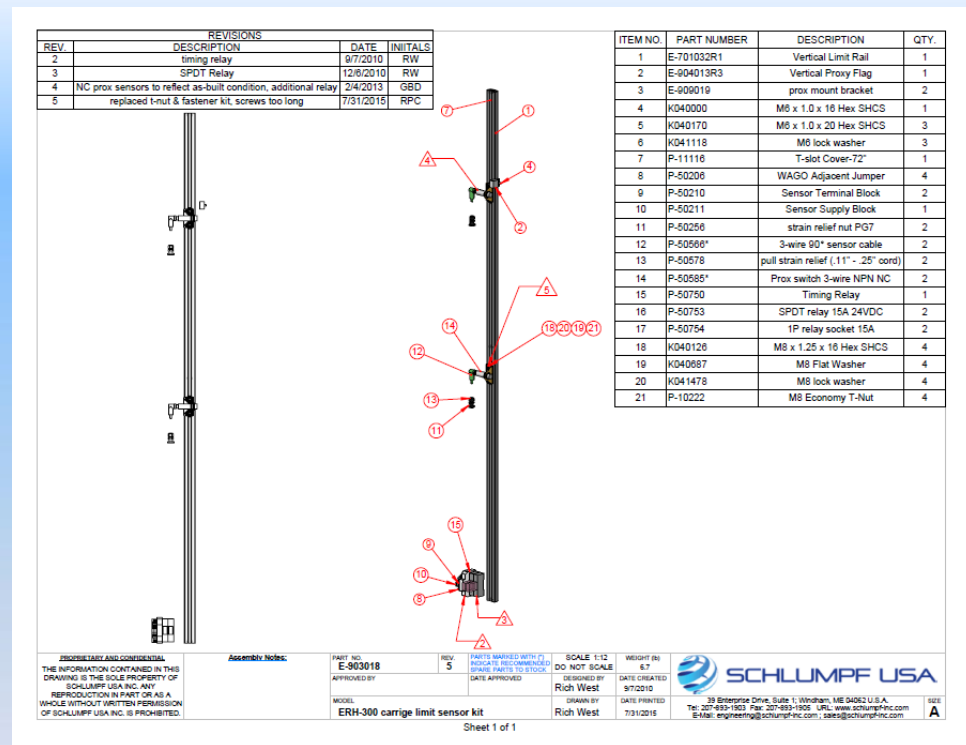
- ALLOWS ALIGNING TOOLING WITH DESTINATION WITHOUT REPOSITIONING THE MACHINE
- FOR ALL TRUCK MODELS. LOAD LIMITS APPLY.



ACCESSORIES FOR MOBILE EQUIPMENT

VERTICAL LIMIT SENSORS

- FOR ALL MOBILE EQUIPMENT
- 1, 2 OR 3 SENSORS
- MOUNTS TO TRUCK COLUMN
- STOP AUTOMATICALLY AT LOADING / UNLOADING HEIGHTS



ACCESSORIES FOR MOBILE EQUIPMENT

LASER POSITIONING

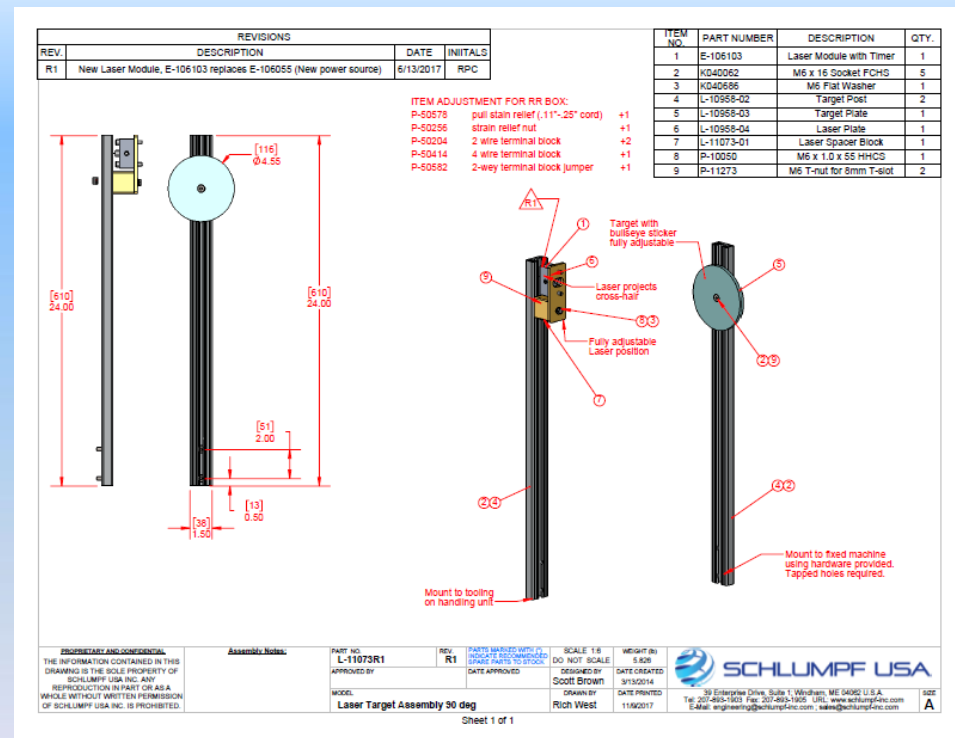
❑ RED CROSS HAIR

LASER EMITTER

❑ ADJUSTABLE LASER TARGET

❑ VISUAL AID TO STOP AT LOADING / UNLOADING HEIGHTS AND POSITION

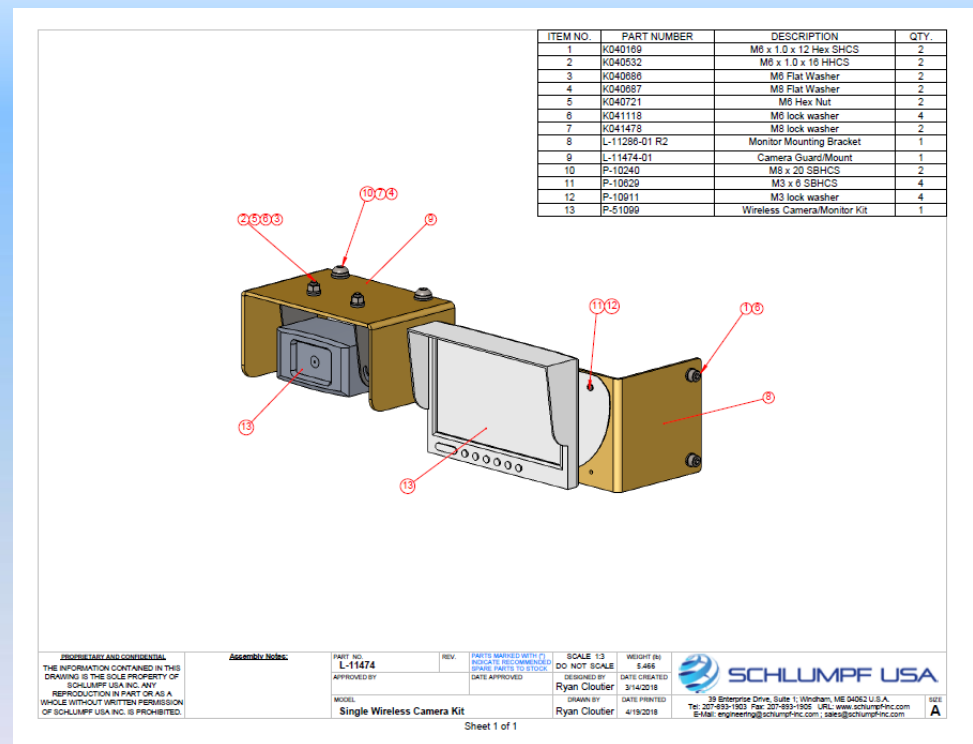
❑ ADJUSTABLE TIMER FOR LASER ON TIME



ACCESSORIES FOR MOBILE EQUIPMENT

VIDEO CAMERA & DISPLAY

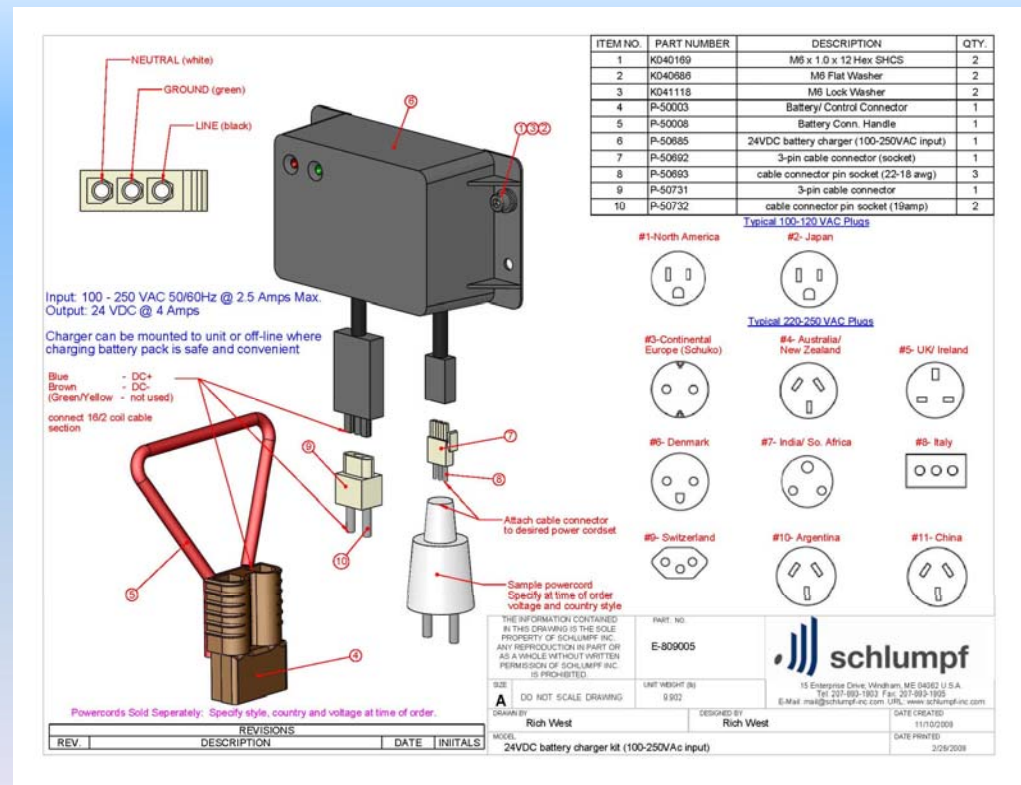
- ❑ VISUAL AID TO STOP AT LOADING / UNLOADING HEIGHTS AND POSITION
 - ❑ INFRARED CAMERA OFFERS CLEAR PICTURE EVEN IN DARK CONDITIONS
 - ❑ SINGLE OR MULTIPLE CAMERAS
 - ❑ 7" LCD DISPLAY
- ### MOUNTS TO MACHINE COLUMN



ACCESSORIES FOR MOBILE EQUIPMENT

AUTOMATIC BATTERY CHARGERS

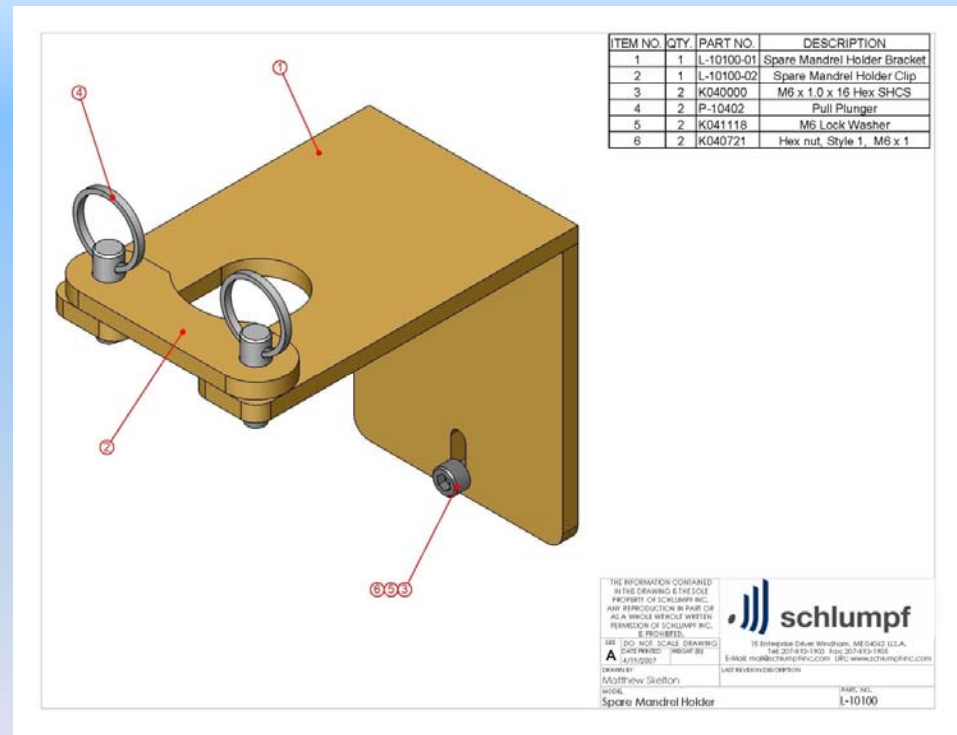
- ❑ 115 OR 230 VAC
- ❑ CHARGER CAN BE WALL OR MACHINE MOUNTED
- ❑ PLUGS FOR ALL COUNTRIES / REGIONS



ACCESSORIES FOR MOBILE EQUIPMENT

SPARE EXPANDING MANDREL HOLDER

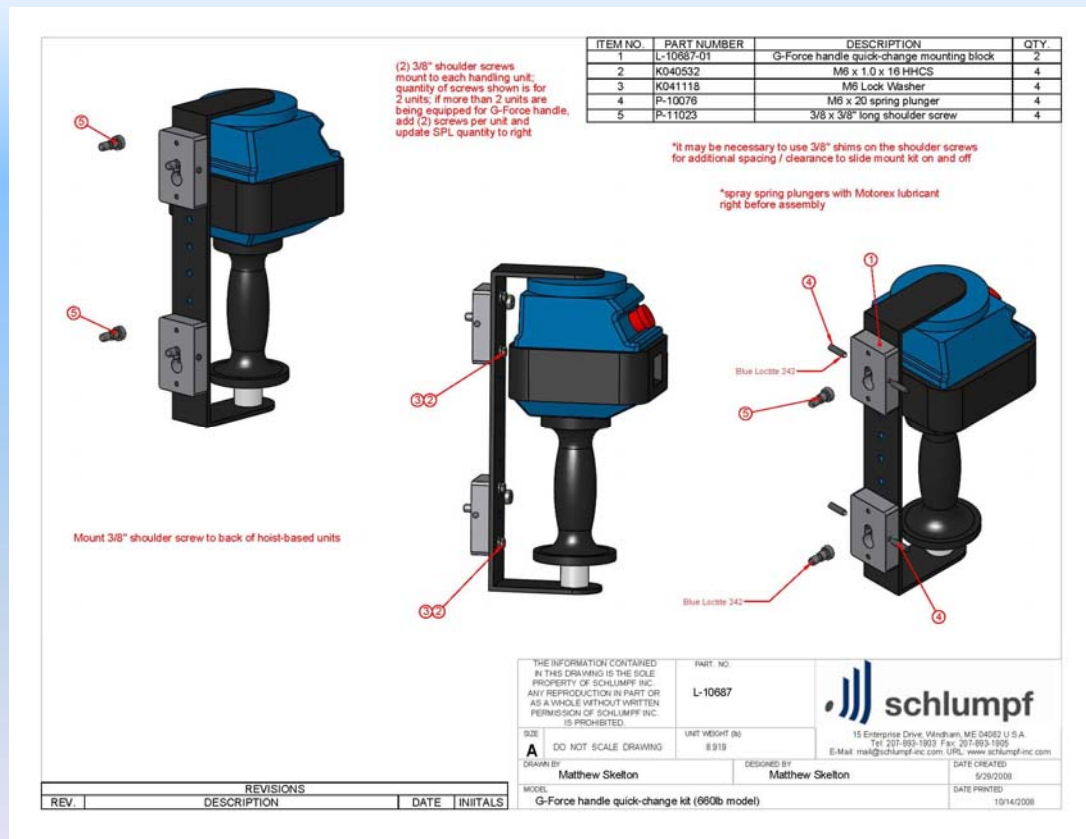
- ❑ CAN BE WALL OR MACHINE MOUNTED
- ❑ UNIVERSAL DESIGN FITS ALL UNIVERSAL MANDRELS
- ❑ KEEPS SPARES OUT OF HARMS WAY, CLEAN AND READILY AVAILABLE



ACCESSORIES FOR HOIST BASED EQUIPMENT

GORBEL G-FORCE QUICK CHANGE MOUNTING KIT

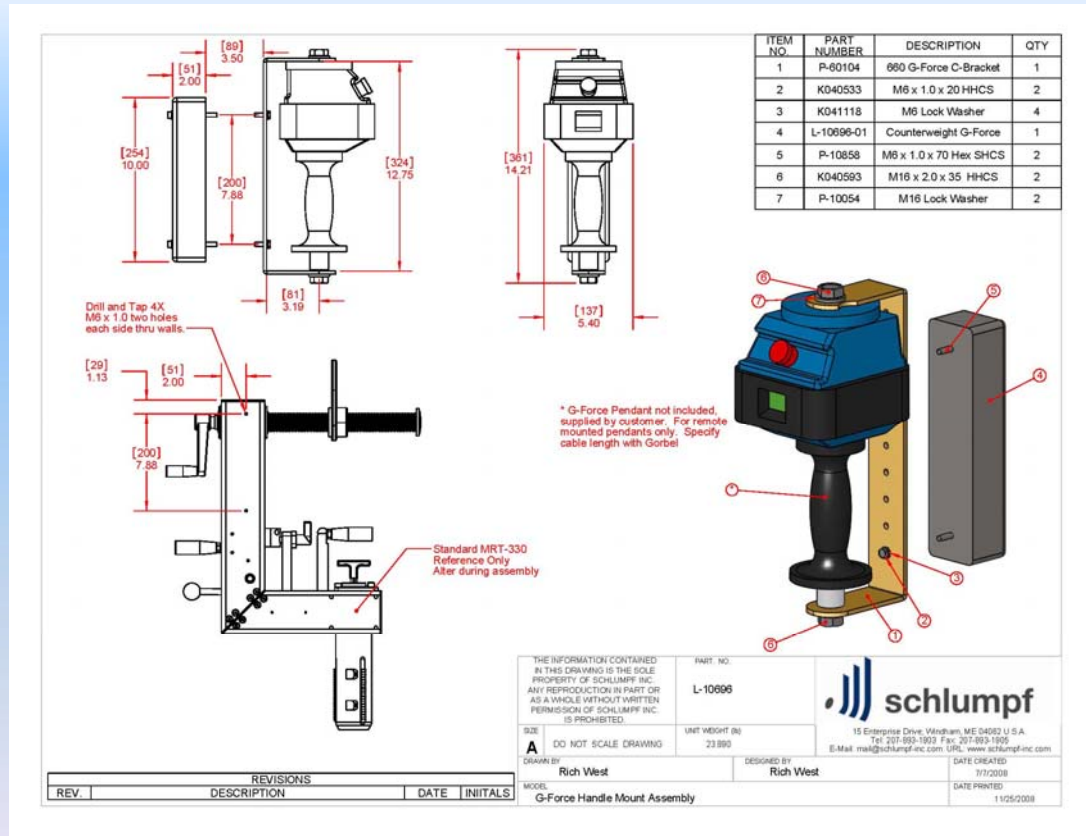
REQUIRED WHEN
SEVERAL DIFFERENT
TOOLS ARE USED



ACCESSORIES FOR HOIST BASED EQUIPMENT

GORBEL G-FORCE HAND CONTROL MOUNTING KIT

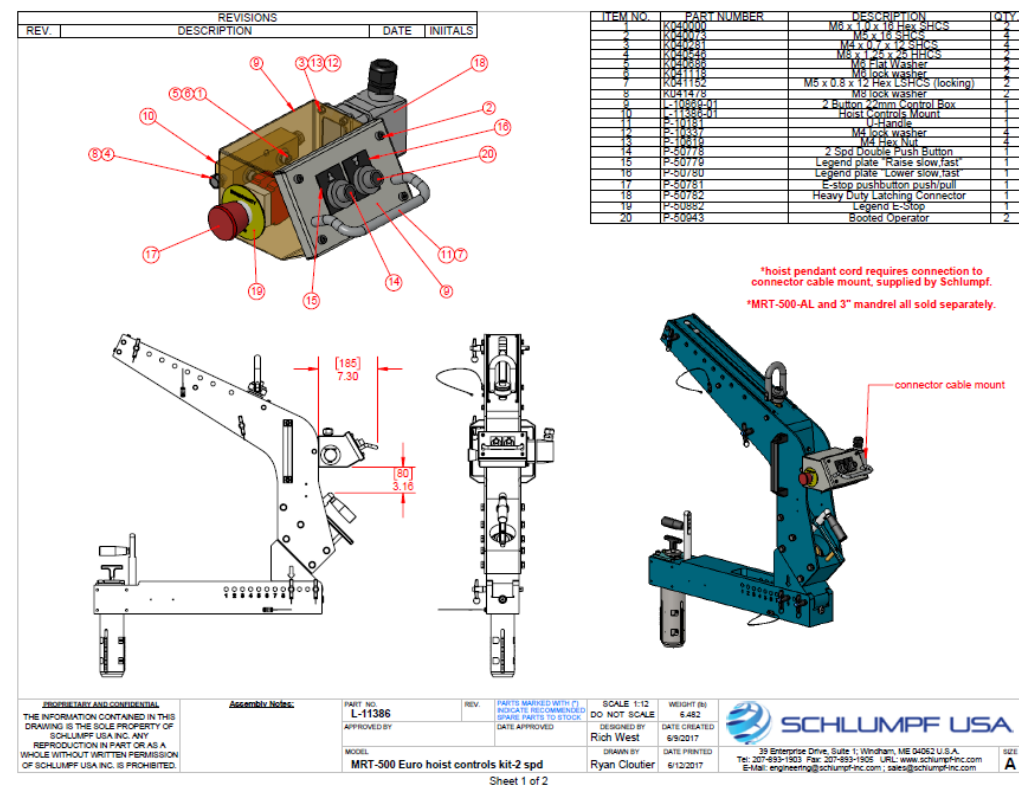
- ❑ FOR MRT-330
AND OTHER TOOLS
- ❑ INCLUDES
COUNTER-WEIGHT TO
OFFSET WEIGHT OF
HAND CONTROL



ACCESSORIES FOR HOIST BASED EQUIPMENT

INTEGRATED HOIST CONTROLS

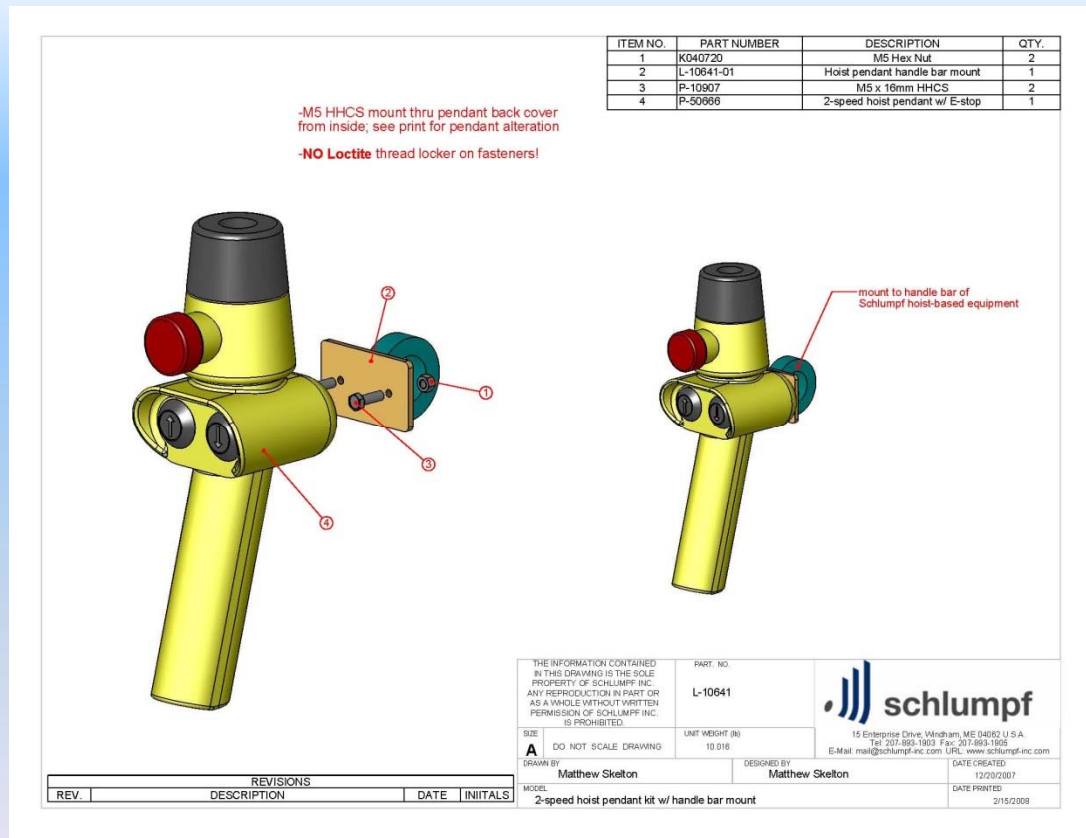
- ❑ SINGLE OR TWO-SPEED SWITCHES
- ❑ E-STOP SWITCH
- ❑ QUICK DISCONNECT
- ❑ EURO OR US DESIGNS
- ❑ FOR MRT-330, MRT-500 & OTHER TOOLS



ACCESSORIES FOR HOIST BASED EQUIPMENT

TWO-SPEED HOIST PENDANT HOLDER

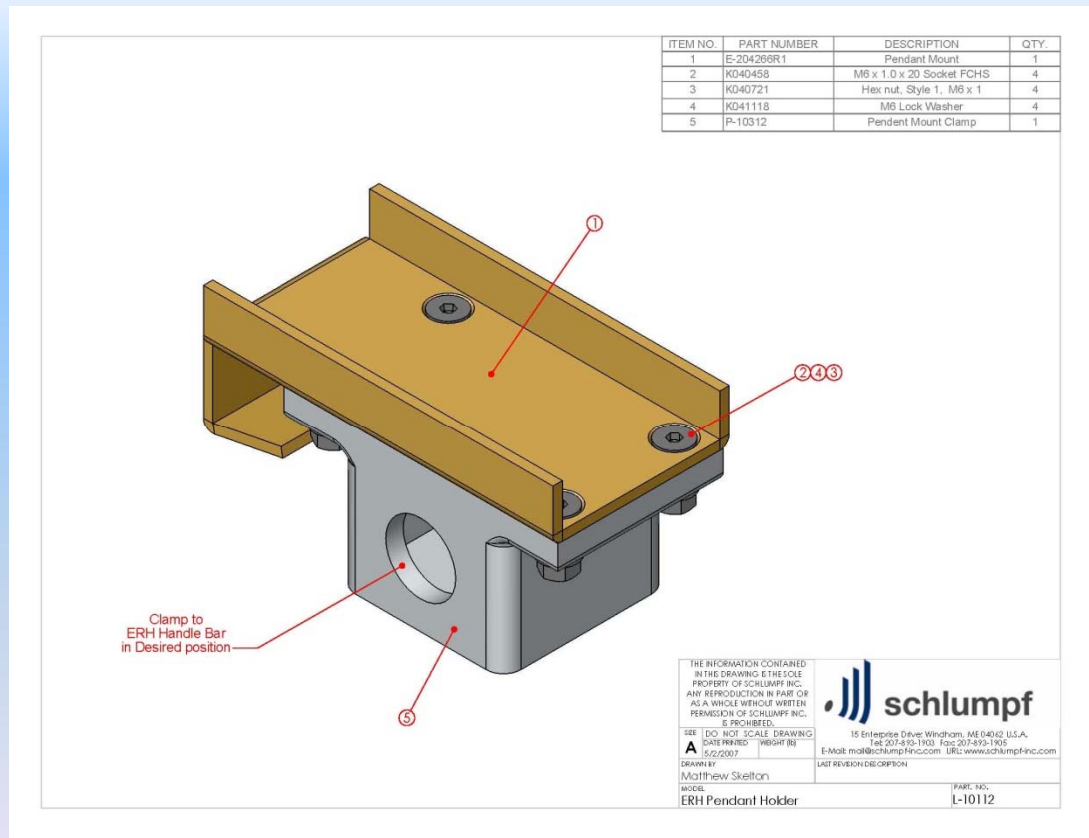
FOR ANY HOIST
BASED SYSTEM WITH
HANDLEBAR
INCLUDING MRT



ACCESSORIES FOR HOIST BASED & MOBILE EQUIPMENT

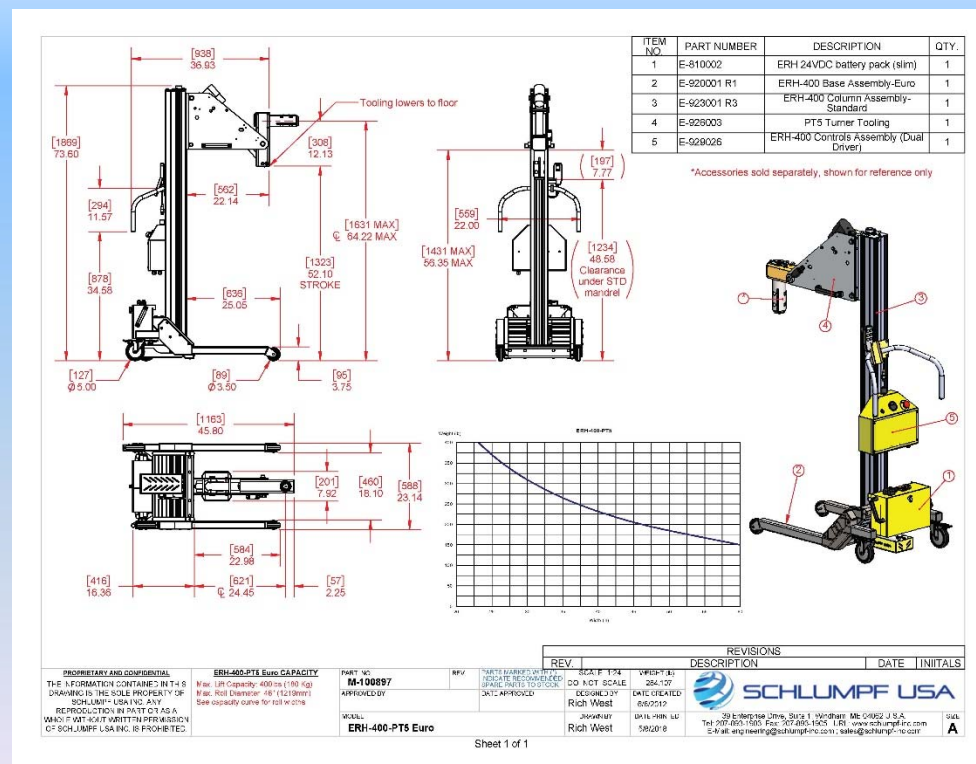
SCHLUMPF (LINAK) PENDANT HOLDER

FOR ANY HOIST
BASED SYSTEM OR
MOBILE SYSTEM
WITH HANDLEBAR



WHAT YOU GET FROM US EVERY TIME:

➤ CUSTOMER APPROVAL DRAWINGS



[illegible]

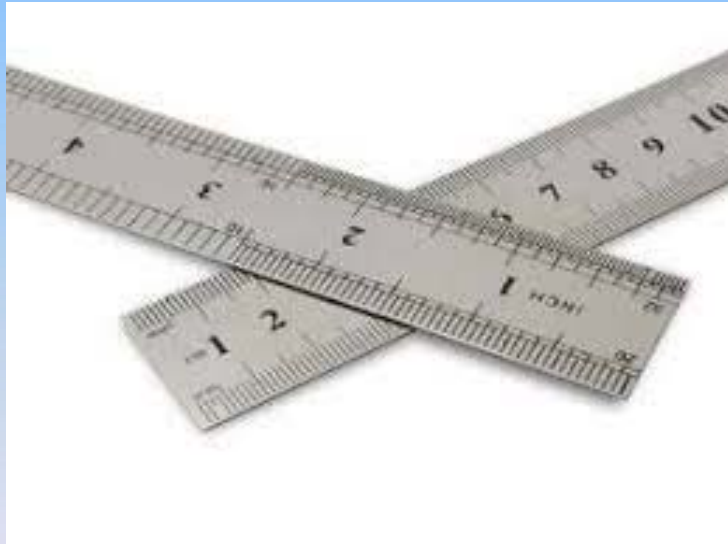
WHAT YOU GET FROM US EVERY TIME:

- DESIGNS COMPLIANT WITH USA AND EUROPEAN STANDARDS FOR INCREASED SAFETY AND RELIABILITY



WHAT YOU GET FROM US EVERY TIME:

- METRIC STANDARDIZATION FOR WORLDWIDE INTERCHANGEABILITY*



* WITH VERY FEW EXCEPTIONS

WHAT YOU GET FROM US EVERY TIME:

➤ COMPLETE, EASY TO UNDERSTAND USER MANUALS IN YOUR LANGUAGE

ERH/ESH Universal User Manual

Table of Contents

- A** User Manual Key
- G** General Guidelines for use of Schlumpf Equipment
- C** Capacity
- L** Labels
- S.U.** Set Up & Installation
 - Base Adjustment
 - Mandrel Installation
 - Limit Switch Adjustment
 - Handlebar Adjustment
 - Battery & Charger
- O** Operation
 - General
 - Turner Tooling
 - Probe Tooling
 - OD Clamping
 - Vertical Lift
 - Jib Boom
 - Cradle Tooling
 - Shaft Tooling
- O.** Accessories

A Accessories

- Mandrels
- Anti-telescoping
- Pusher
- Other Options

M Maintenance

- Troubleshooting
- Periodic Maintenance
- Fastener Torque & Proper Lube
- Spare Parts
- Service Information
- Notes & Maintenance Records

D Manufacturer's Declaration

P Power Information

- Charger operation
- Battery MSDS sheets

BPL Spare Parts List

- Assembly drawings, spare parts lists & wiring diagrams

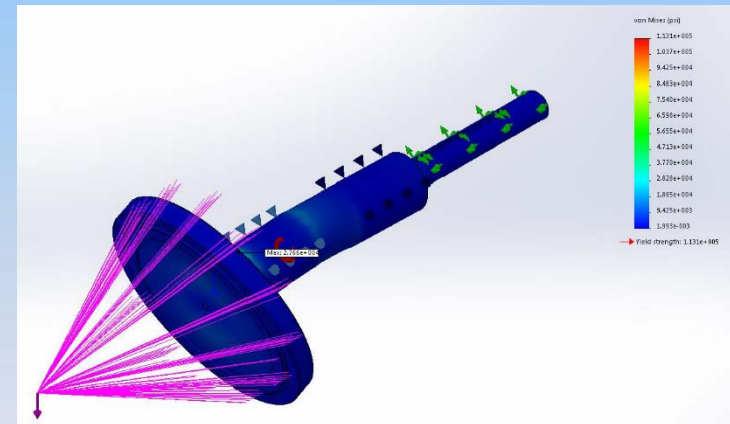
Schlumpf, Inc., 39 Enterprise Drive, Suite 1, Windham, Maine 04092 U.S.A.
Tel: 207-893-1903 Fax: 207-893-1905
Internet: www.schlumpf-inc.com E-mail: mail@schlumpf-inc.com

Schlumpf USA

Page 1

WHAT YOU GET FROM US EVERY TIME:

- MODERN PRODUCTS DESIGNED & MANUFACTURED USING THE LATEST MATERIALS & FABRICATION TECHNIQUES INCLUDING LASER, WATER-JET AND CNC MACHINING



HOW ROLL HANDLERS WORK

THE HEART OF OUR ROLL HANDLING SYSTEM IS THE EXPANDING MANDREL. THE MANDREL GRIPS THE CORE I.D. FOR LIFTING & TURNING. OUR MANDRELS ARE 'FAIL SAFE" – THEY ARE EXPANDED ALL THE TIME AND THE ROLL CAN'T BE RELEASED UNTIL FULLY SUPPORTED AND ALL LOAD IS REMOVED FROM THE GRIPPER TEETH. THERE ARE MANY TYPES OF MANDRELS & GRIPPERS...



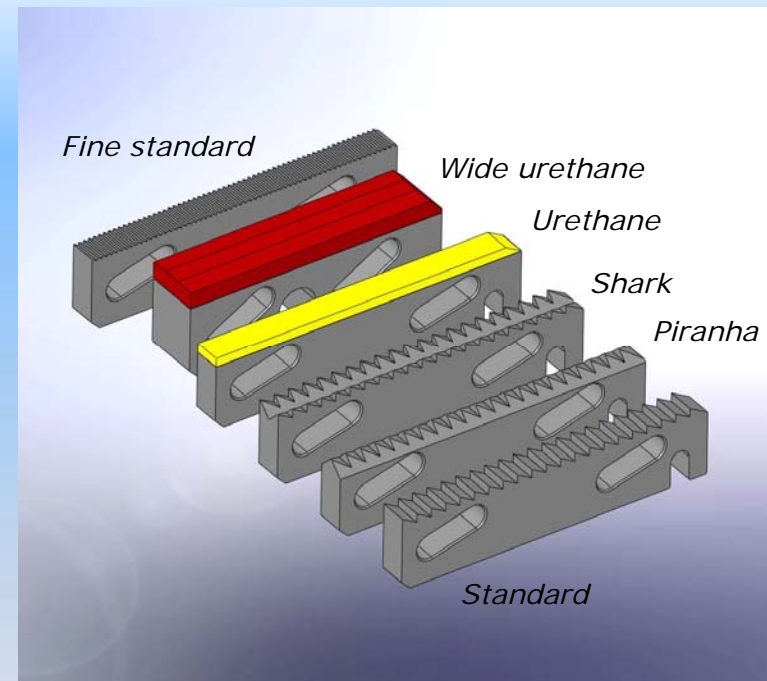
NOTE! TOOTH TYPE GRIPPERS SHOULD BE RETRACTED BEFORE INSERTING THE MANDREL INTO THE CORE TO PREVENT CORE DAMAGE AND DUSTING

MANDREL GRIPPERS

HOW TO CHOOSE

NOT ALL CORES ARE ALIKE! WE OFFER NUMEROUS TYPES OF GRIPPERS FOR DIFFERENT CORES MATERIALS:

- ✓ STANDARD - USED IN 90%+ OF ALL APPLICATIONS FOR PAPER CORES
- ✓ SHARK - FOR PVC OR VERY HARD FIBER CORES
- ✓ PIRANHA - FOR HARD FIBER CORES AND HIGH WEAR PROBLEMS
- ✓ URETHANE - FOR ALUMINUM, STEEL OR PLASTIC CORES
- ✓ FINE STANDARD - FOR MINIMAL CORE DAMAGE OR DUSTING
- ✓ LEAF OR WIDE LUG FOR ALUMINUM, STEEL OR PLASTIC CORES

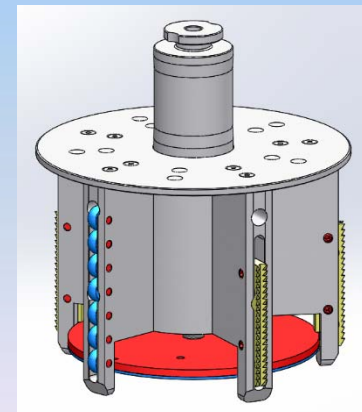
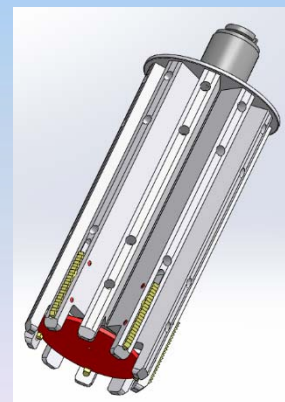
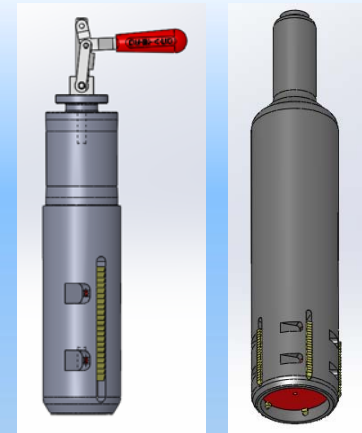
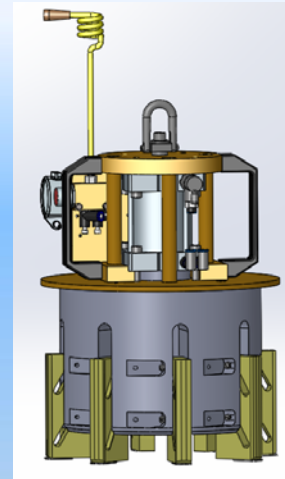


Note! Tooth type grippers should be retracted before inserting the mandrel into the core to prevent core damage and dusting

MANDREL DESIGNS STANDARD & CUSTOM

SCHLUMPF OFFERS HUNDREDS OF DIFFERENT MANDREL DESIGNS FOR SPECIAL APPLICATIONS.

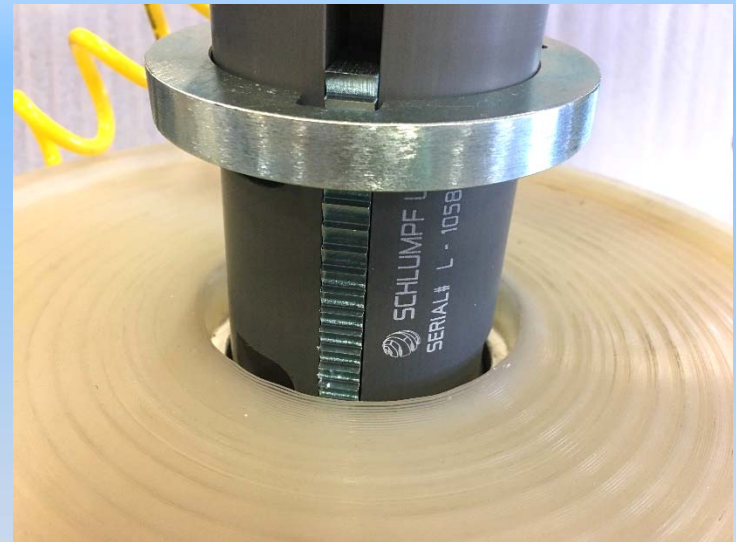
- ❑ UNIVERSAL TYPE
- ❑ HEAVY DUTY FOR HIGH LOADS
- ❑ STANDOFF TYPE FOR LARGE DIAMETER CORES $> 8" = 200 \text{ MM}$
- ❑ URETHANE ELASTOMER FOR SMALL BORES $< 2" = 50 \text{ MM}$
- ❑ FINGER LINK TYPE FOR SPOOLS
- ❑ LOCKING TOGGLE



RETRACTING THE MANDREL GRIPPERS

MANDREL GRIPPERS CAN ONLY BE RETRACTED AND RELEASED FROM THE CORE WHEN THE LOAD ON THE GRIPPER TEETH IS FULLY REMOVED! THERE ARE MANY METHODS TO RETRACT THE GRIPERS:

- ❑ T-HANDLE
- ❑ TOGGLE HANDLE
- ❑ PNEUMATIC RETRACT
- ❑ ELECTRIC REMOTE RETRACT
- ❑ MANUAL REMOTE RETRACT
- ❑ BUMPER NOSES



MANDREL AND RETRACTION OPTIONS WILL BE DISCUSSED IN GREATER DETAIL LATER IN THIS PRESENTATION

CUSTOM DESIGNS

IF YOU DON'T SEE WHAT YOU ARE
LOOKING FOR, PLEASE ASK!
CHANCES ARE THAT WE'VE
ALREADY DONE SOMETHING
SIMILAR.

WE HAVE THE KNOWLEDGE AND
CAPABILITIES! GIVE US A CHANCE!



THANK YOU

THE SCHLUMPF USA SALES & ENGINEERING TEAMS THANK
YOU FOR YOUR REVIEW OF THIS TRAINING MODULE.
PLEASE CONTACT US WITH ANY QUESTIONS OR
SUGGESTIONS YOU MAY HAVE!

SCHLUMPF USA INC.
39 ENTERPRISE DRIVE, SUITE 1
WINDHAM, ME 04062 USA
T: +1 207 893 1903
F: +1 207 893 1905
SALES@SCHLUMPF-INC.COM
WWW.SCHLUMPF-INC.COM
